

OUTILS POUR LA PLOMBERIE





KING TONY
7912-22

TYPE
42MM

KING TONY
7913-42

KING TONY 6541-141

KING TONY 4724-11
GR-1

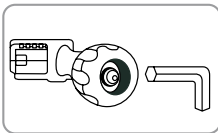
KING TONY

Coupe-tubes à cliquet

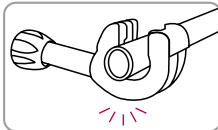
- Coupe sans avoir à tourner entièrement l'outil autour du tube
- Le mécanisme à cliquet permet une utilisation en zone étroite
- Coupe les matériaux les plus résistants : acier inoxydable, cuivre et aluminium
- L'utilisation à une main limite la fatigue musculaire et les risques de blessures

791221

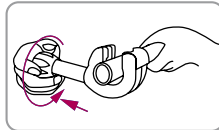
- Molette de recharge dans le pommeau



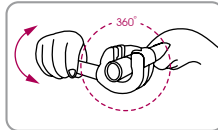
Utilisez une clé mâle 6 pans pour retirer la molette de recharge située dans le pommeau.



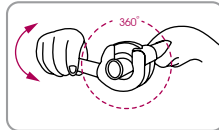
1. Placez les mâchoires de coupe autour du tube maintenu fermement.



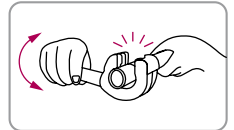
2. Tirez et tournez le pommeau dans le sens des aiguilles d'une montre pour serrer la mâchoire.



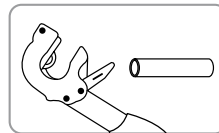
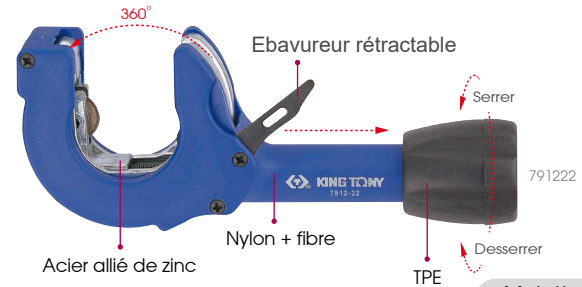
3. Poussez le pommeau vers le bas puis remontez-le pour démarrer la coupe.



4. Répétez les mouvements de rotation jusqu'à ce que l'ouverture soit revenue en haut.



5. Si nécessaire, serrez de nouveau l'outil autour du tube et répétez chaque action jusqu'à ce que le tube soit coupé.



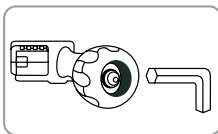
Déployez la lame d'ébavurage fournie pour lisser les arêtes.



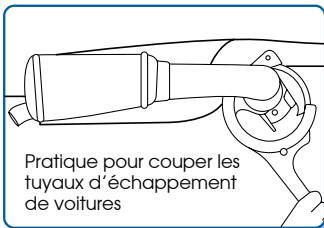
KING TONY	Capacité ø mm	Épaisseur de coupe max (mm)		Inclus	Kilogrammes	Boîte / Carton
		Inoxydable	Autre			
791221	8-28	2	3.0	Molette de recharge	389	1 / 40
791222	12-35	2	3.0	Molette de recharge et ébavreur intégré	452	1 / 40

791223

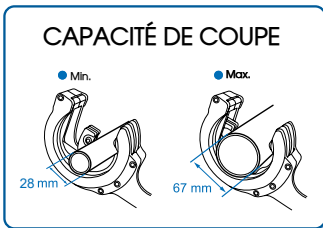
- Molette de recharge dans le pommeau



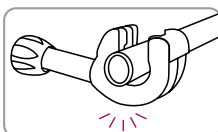
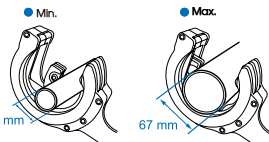
Utilisez une clé mâle 6 pans pour retirer la molette de recharge située dans le pommeau.



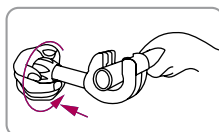
Pratique pour couper les tuyaux d'échappement de voitures



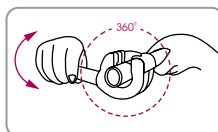
CAPACITÉ DE COUPE



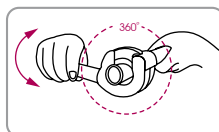
1. Placez les mâchoires de coupe autour du tube maintenu fermement.



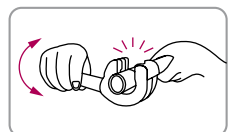
2. Tirez et tournez le pommeau dans le sens des aiguilles d'une montre pour serrer la mâchoire.



3. Poussez le pommeau vers le bas puis remontez-le pour démarrer la coupe.



4. Répétez les mouvements de rotation jusqu'à ce que l'ouverture soit revenue en haut.



5. Si nécessaire, serrez de nouveau l'outil autour du tube et répétez chaque action jusqu'à ce que le tube soit coupé.

KING TONY	Capacité ø mm	Épaisseur de coupe max (mm)		Inclus	Kilogrammes	Boîte / Carton
		Inoxydable	Autre			
791223	28-67	2	3.0	Molette de recharge	1122.6	1 / 10

Coupe-tubes à crémaillère

7913

- Matières coupées : tuyaux PVC, PP, PE, PEX, PB
- Conception à crémaillère pour une coupe rapide

• Pour 791342



79134211

60

10 / 200



Capacité

Ø inch

Ø mm



791342

1/2~1-5/8

6~42

360

10 / 50

Coupe-tubes plastique souple

7913B35

- Matières coupées : PVC, PP, PE, PEX, PB, tuyau plastique souple
- Corps en aluminium
- Utilisation à une main
- Coupe sans bavure
- Lame réversible



Capacité

Ø inch

Ø mm



791342

1/8~1-3/8

3~35

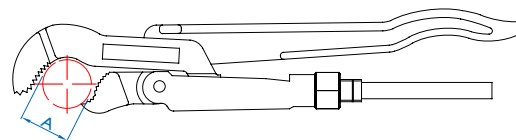
215

20 / 60

Clés serre-tubes type Suédois

6521

- Pour écrous, boulons et matériel plat
- Auto-serrage efficace : la prise du tube en 3 points garantit une adhérence fiable et ferme, même sur les tuyaux lisses



- Denture en "S"



inch

A

mm

inch

L

mm



652113

1

25

13

330

791

1 / 20

652116

1-1/2

38

16-1/2

420

1450

1 / 12

652121

2

51

21

535

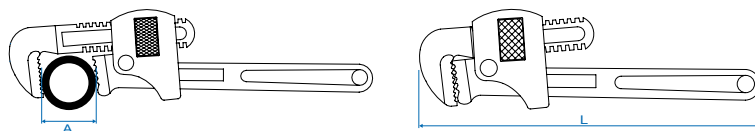
2404

1 / 6

Clés serre-tubes type Stillson

6531

- Modèles professionnels "Stillson"
- Acier de haute qualité



🔧	A		L		🏺	📦/📦
	inch	mm	inch	mm		
653110	1-3/16	34	10	231	600	1 / 24
653112	1-9/16	42	12	271	780	1 / 24
653114	1-7/8	48	14	315	1050	1 / 12
653118	2-3/8	60	18	407	1720	1 / 12
653124	2-15/16	75	24	539	3150	1 / 6
653136	4	102	36	825	6280	1 / 2
653148	5-1/2	140	48	1034	9750	1 / 2

Clés serre-tubes type bec de canard

6541L

Aluminium

- Idéales pour travailler sur les tuyaux se trouvant le long des murs, des sols, au ras des plafonds et autres endroits difficiles d'accès
- Corps en Aluminium
- Bec déporté à 90°



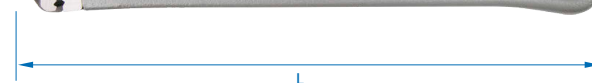
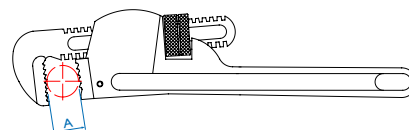
🔧	A		L	🏺	📦/📦
	mm	inch			
654114L	60	14	356	856	1 / 20
654118L	76	18	457	1486	1 / 10

Clé serre-tubes en aluminium

6533L

Aluminium

- 40% plus légère que les modèles classiques de même taille, facile à utiliser
- Convient à tous les types de tuyauterie
- La mâchoire en acier forgé est traitée thermiquement
- Molette de réglage facile à tourner, pour un ajustement rapide de la dimension



🔧	A		L		🏺	📦/📦
	mm	inch	mm	mm		
653310L	30	10	254	540	6 / 24	
653312L	40	12	300	833	6 / 18	
653314L	50	14	356	600	6 / 12	
653318L	60	18	455	1500	3 / 6	
653324L	75	24	600	2500	2 / 4	
653336L	85	36	910	5000	1 / 2	
653348L	110	48	1200	8000	1 / 2	

Pince à cintrer à 90° - 4 en 1

7CA1510M

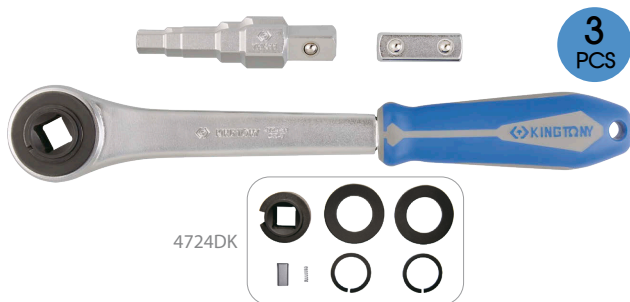
- Changer rapidement et simplement le diamètre du tuyau à cintrer.
- Conçue pour cintrer les tubes en laiton, cuivre, acier ou aluminium de diamètres extérieurs de 5, 6, 8 et 10 mm et d'une épaisseur maximum de 0.9 mm.
- Idéale pour les travaux dans les espaces restreints
- Poignée confortable évitant que les mains glissent.



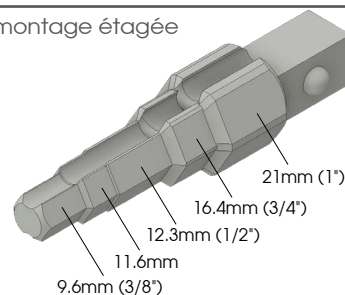
			Longueur totale inch	mm		
7CA1510M	5, 6, 8, 10	0.9	10-7/8	275	882	3 / 12

Jeu de clé de montage étagée avec cliquet

7HA03



▪ Clé de montage étagée



- Conçue pour l'installation et le retrait de la plupart des valves de radiateur et des connecteurs de réservoir
- Les hexagones de 3/8", 11.6mm, 1/2", 3/4" et 1", disposés sur la longueur de la clé, sont adaptés aux différentes tailles d'électrovannes et de soupapes
- Le 472411G, associé au 472401, peut être utilisé en tant que cliquet traditionnel
- Le cliquet 1/2" rend les installations rapides et faciles
- 472411G : engrenage à 32 dents (11°), DIN 3122



Contenu

0.74 1 / 24

472411G

7HA11 3/8", 11,6 mm, 1/2", 3/4", 1"

472401

Clés pour la climatisation - réfrigération

3411003MR



4
PCS

- Coffret métallique
- Clé à fourche dynamométrique pré-étalonnée
- Spécialement conçue pour l'air climatisé et les services de réfrigération
- Précision du couple $\pm 4\%$

Contenu

3.29 1 / 5

3411

17 mm x 18 Nm
22 mm x 42 Nm
26 mm x 55 Nm
29 mm x 65 Nm



TOURNEVIS, CLES MALES ET EMBOUTS



KING TONY

KING TONY

KING TONY

KING TONY

REVISED CONTENTS

FILE	DRAWER	DESIGN	RE CHECK	APPROVED BY	DRAWING NO.
11.5					1
UNIT					
mm					

KING TONY TOOLS CO. LTD

00ARAKT
0606RAKT
16506RAKT
2210807RAKT

Type A
Type B

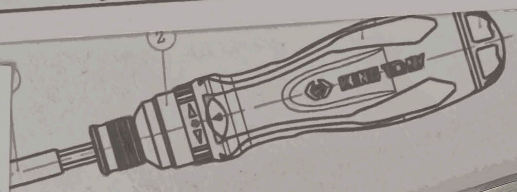
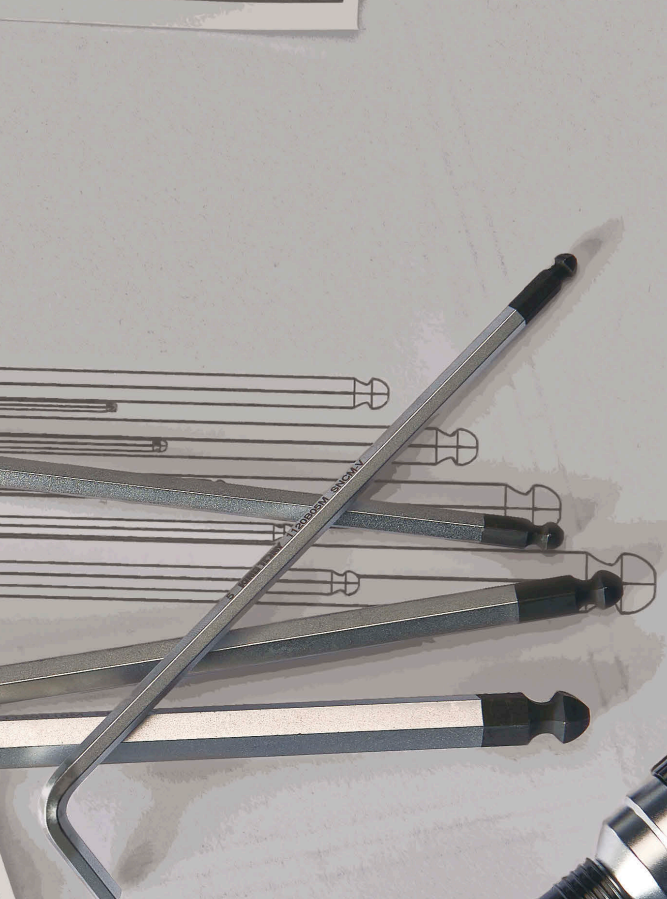
TOLERANCE	SCALE	DRAWER	DESIGN	RE CHECK	APPROVED BY	DESCRIPTION
+0.3	1:1					14

1008	ID: 14610035
6140	ID: 14610045
8660	-
PP+TPR	-
HARDNESS	
ITEM NO.	4621xxxxRAKT
CODE	K2051

DATE	VERSION	MATERIAL	SCALE	DRAWER	DESIGN	RE CHECK	APPROVED BY
2014-2-14			1:1				
UNIT				mm			

KING TONY TOOLS CO., LTD.

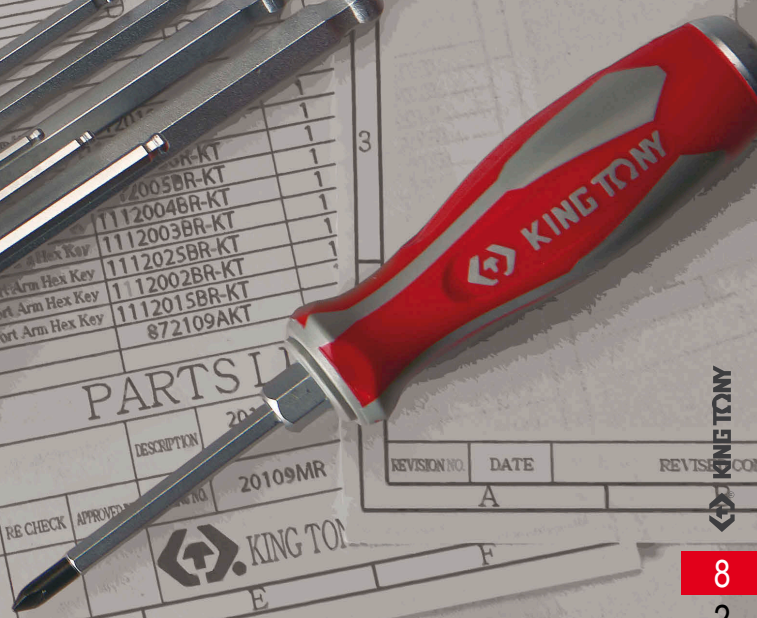
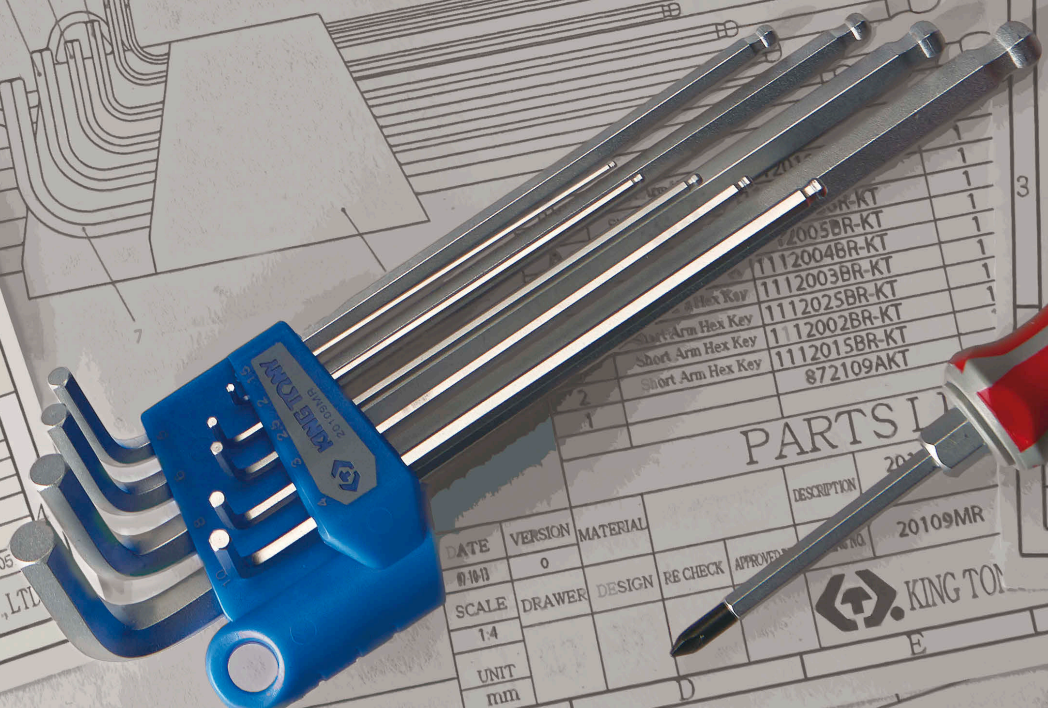
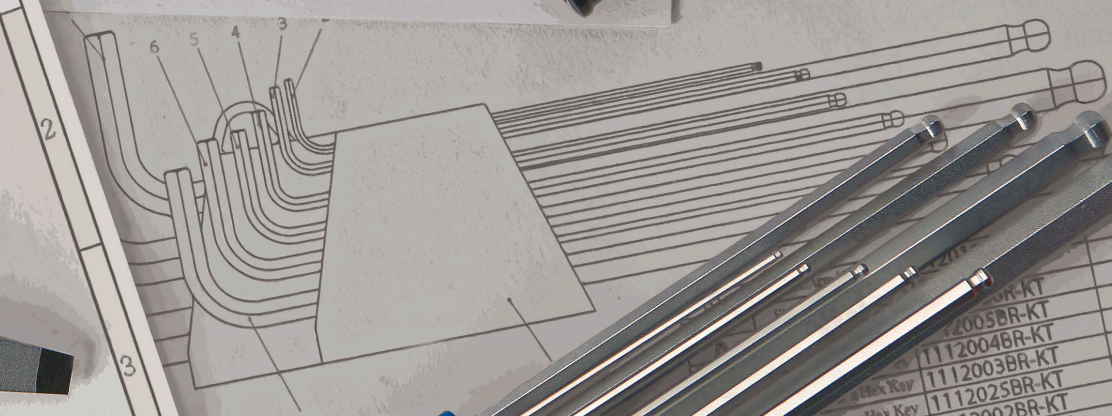
KING TONY TOOLS CO., LTD.



11	BITS	1102566SQIKT
10	BITS	1102555SQIKT
9	BITS	1102504SQIKT
8	BITS	1102502ZQ-KT
7	BITS	1102502PQ-KT
6	BITS	1102501PQ-KT
5		Z2155P01
4		Z2155P02
3		Z215500A
2		Z21557NF
1		91138



	SIZE	d1	∅d2	L1±2	L2±2
14610103	No.1	5.0	4.8	75	110
14610204	No.2	6.0	5.8	100	110
14610306	No.3	8.0	7.8	150	120



8660	PP+TPR
HARDNESS	
ITEM NO.	K2051
CODE	K2051

DATE	VERSION	MATERIAL	SCALE	DRAWER	DESIGN	RE CHECK	APPROVED BY
2014-10-10	0		1:4				
UNIT				mm			

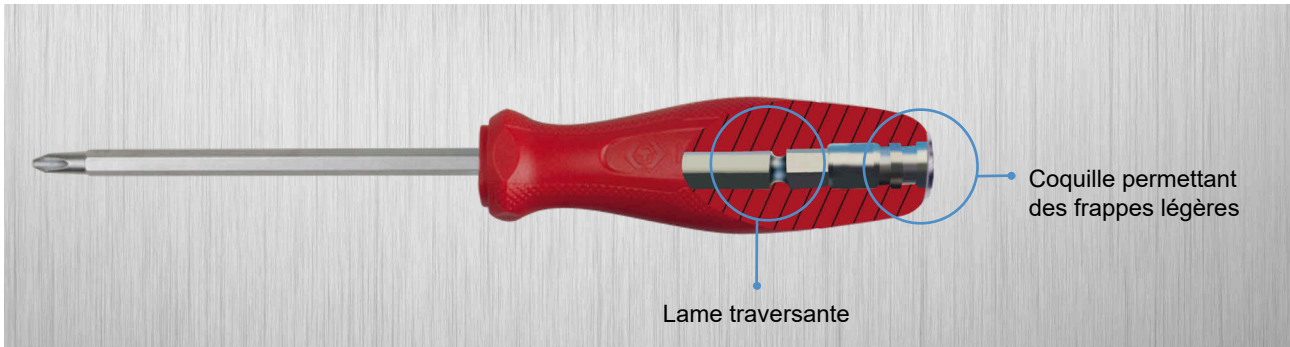
PARTS LIST

KING TONY

KING TONY

Tournevis à lame traversante

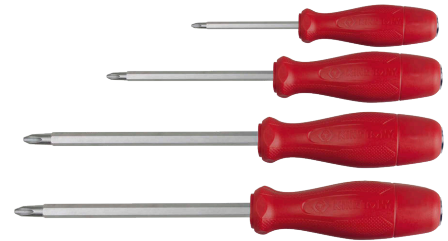
- Lame en Cr-V
- Poignée en PP
- Finition : lame polie, chromée



1481

- Empreinte PHILLIPS®, lame hexagonale
- DIN ISO 8764

No.	mm	inch	mm	mm	g	kg	No. / Box
14810103	PH1	75	3	5.0	70	12 / 240	
14810204	PH2	100	4	6.0	90	12 / 144	
14810205	PH2	125	5	6.0	115	12 / 144	
14810306	PH3	150	6	8.0	206	12 / 144	
14810412	PH4	300	12	10.0	362	10 / 40	



E = Poignée agrandie

1482

- Empreinte pour vis à fente, lame hexagonale
- DIN ISO 2380

No.	mm		inch		mm	mm	g	kg	No. / Box
	mm	inch	mm	inch					
14825503	5.5	7/32	0.8	75	3	5.0	70	12 / 240	
14826504	6.5	1/4	1.2	100	4	6.0	90	12 / 144	
14826506	6.5	1/4	1.2	150	6	6.0	120	12 / 144	
14820806	8.0	5/16	1.2	150	6	8.0	185	12 / 144	
14821012	10.0	12/32	1.6	300	12	10.0	337	10 / 40	



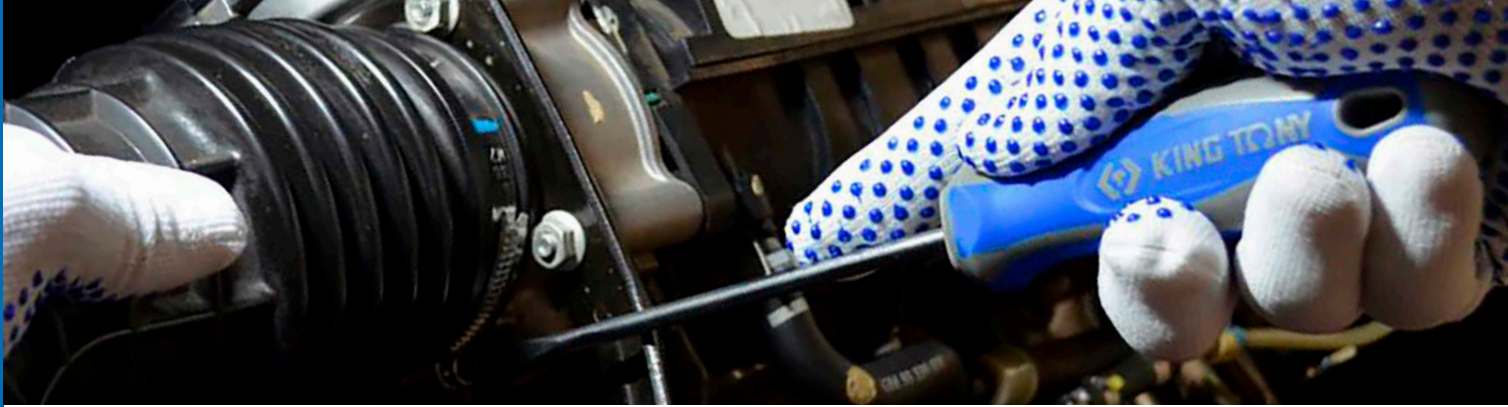
E = Poignée agrandie

36206MR

Contenu	No.	mm	inch	mm	mm	g	kg	No. / Box
PH1 x 75, PH2 x 100, PH3 x 150	1481	75	3	5.0	70	12	240	
5.5 x 75, 6.5 x 150, 8 x 150	1482	75	3	6.0	90	12	144	



6
PCS.



Tournevis

- Lame en SNCM + V
- Poignée en PP + TPR
- Finition : lame polie, chromée, empreinte traitée noire

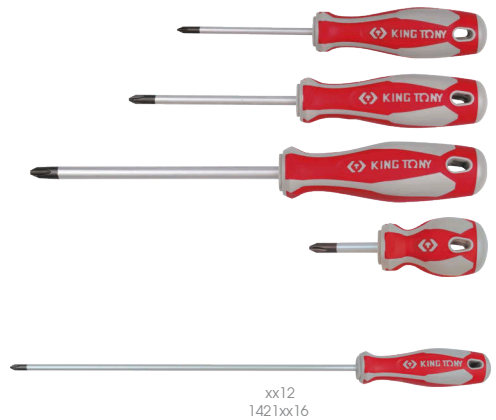
1421



- Empreinte PHILLIPS®, lame ronde
- DIN ISO 8764

	No.	mm		mm	g	mm	No. /
		mm	inch				
14210023R	PH0	60	2-3/8	3.2	35	12 / 144	
14210132R	PH1	80	3-1/8	4.5	43	12 / 96	
14210104R	PH1	100	4	4.5	52	12 / 96	
14210214R	PH2	38	1-1/2	6.0	38	12 / 144	
14210204R	PH2	100	4	6.0	74	12 / 96	
14210206R	PH2	150	6	6.0	95	12 / 144	
14210306R	PH3	150	6	8.0	132	12 / 144	

	No.	mm		mm	g	mm	No. /
		mm	inch				
14210112R	PH1	300	12	4.5	80	12 / 96	
14210212R	PH2	300	12	6.0	127	12 / 96	
14210116R	PH1	400	16	4.5	93	12 / 96	
14210216R	PH2	400	16	6.0	150	12 / 96	



xx12
1421xx16

1422



- Empreinte pour vis à fente, lame ronde
- DIN ISO 2380

	mm		mm	mm		mm	g	mm	No. /
	mm	inch		mm	inch				
14220303R	3.0	1/8	0.5	75	3	3.2	36	12 / 144	
14220404R	4.0	5/32	0.8	100	4	4	42	12 / 96	
14220503R	5.0	3/16	0.8	75	3	5	4	12 / 96	
14220504R	5.0	3/16	0.8	100	4	5	45	12 / 96	
14225503R	5.5	7/32	1.0	75	3	5	50	12 / 96	
14225504R	5.5	7/32	1.0	100	4	5	60	12 / 96	
14225505R	5.5	7/32	1.0	125	5	5	70	12 / 144	
14225506R	5.5	7/32	1.0	150	6	5	80	12 / 144	
14226514R	6.5	1/4	1.2	38	1-1/2	6	39	12 / 144	
14226504R	6.5	1/4	1.2	100	4	6	60	12 / 96	
14226506R	6.5	1/4	1.2	150	6	6	85	12 / 144	
14220806R	8.0	5/16	1.2	150	6	8	130	12 / 144	
14220807R	8.0	5/16	1.2	175	7	8	141	12 / 144	
14220808R	8.0	5/16	1.2	200	8	8	152	12 / 144	
14221008	10.0	3/8	1.6	200	8	10	215	12 / 72	
14221210	12.0	1/2	1.9	250	10	10	249	12 / 96	

	mm		mm	mm		mm	g	mm	No. /
	mm	inch		mm	inch				
14220512R	5.0	3/16	0.8	300	12	5	105	12 / 96	
14220516R	5.0	3/16	0.8	400	16	5	121	12 / 96	
14226512R	6.5	1/4	1.2	300	12	6	127	12 / 96	
14226516R	6.5	1/4	1.2	400	16	6	150	12 / 96	



1422xx12
1422xx16



Tournevis

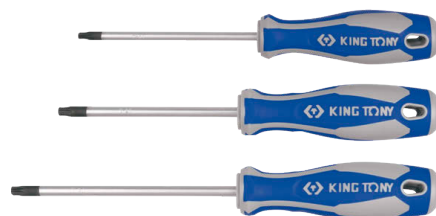
- Lame en SNCM + V
- Poignée en PP + TPR
- Finition : lame polie, chromée, empreinte traitée noire

1423



- Empreinte TORX®, lame ronde

	Dim.	mm		mm	g	kg
		mm	inch			
14230602	T6	48	2	3.2	47	12 / 144
14230702	T7	48	2	3.2	47	12 / 144
14230803	T8	75	3	3.2	49	12 / 240
14230903	T9	75	3	3.2	49	12 / 240
14231003	T10	75	3	3.2	49	12 / 144
14231503	T15	75	3	4.0	55	12 / 96
14231510	T15	250	10	5.0	84	12 / 144
14232004	T20	100	4	5.0	53	12 / 96
14232010	T20	250	10	5.0	84	12 / 96
14232504	T25	100	4	6.0	83	12 / 144
14232510	T25	250	10	6.0	129	12 / 96
14232704	T27	100	4	6.0	83	12 / 144
14233005	T30	125	5	6.0	89	12 / 144
14233010	T30	250	10	6.0	130	12 / 96
14234006	T40	150	6	8.0	142	12 / 144



14232010*, 14232510*, 14233010*
pour tableau de bord, carrosserie,
compartiment moteur ainsi que industrie.

1427



- Empreinte RESISTORX®, lame ronde

	Dim.	mm		mm	g	kg
		mm	inch			
14270803R	T8H	75	3	3.2	49	12 / 240
14270903R	T9H	75	3	3.2	49	12 / 240
14271003R	T10H	75	3	3.2	49	12 / 144
14271503R	T15H	75	3	4.0	55	12 / 96
14272004R	T20H	100	4	5.0	53	12 / 96
14272504R	T25H	100	4	6.0	83	12 / 144
14272704R	T27H	100	4	6.0	83	12 / 144
14273005R	T30H	125	5	6.0	89	12 / 144
14274006R	T40H	150	6	8.0	142	12 / 144



1428



- Empreinte POZIDRIV®, lame ronde
- DIN ISO 8764

	No.	mm		mm	g	kg
		mm	inch			
14280023R	PZ0	60	2-3/8	3.2	35	12 / 96
14280132R	PZ1	80	3-1/8	4.5	43	12 / 96
14280104R	PZ1	100	4	4.5	52	12 / 96
14280204R	PZ2	100	4	6.0	74	12 / 96
14280306R	PZ3	150	6	8.0	132	12 / 144



1424

- Empreinte carrée, lame ronde

	Dim.	mm		mm	g	kg
		mm	inch			
14240105	RB1	125		5.0	64	20 / 240
14240204	RB2	100		6.0	87	12 / 144
14240206	RB2	150		6.0	102	12 / 144



Jeux de tournevis

- Lame en SNCM + V
- Poignée en PP + TPR
- Finition : lame polie, chromée, empreinte traitée noire

31107MR



7
PCS.



Contenu

0.7 1 / 20

31107MR		PH0 x 60, PH1 x 80, PH1 x 100, PH2 x 38, PH2 x 100, PH2 x 150, PH3 x 150
---------	--	--

30118MR



8
PCS.



Contenu

0.87 1 / 20

30118MR		3 x 75, 5 x 75, 5 x 100, 8 x 150, 8 x 200, 6.5 x 100, 6.5 x 150, 6.5 x 38
---------	--	---

30115MR



5
PCS.



Contenu

0.54 1 / 20

30115MR		PH1 x 80, PH2 x 100
		4 x 100, 5.5 x 125, 6.5 x 150

31116MR



6
PCS.



Contenu

0.56 1 / 20

31116MR		PH0 x 60, PH1 x 80, PH2 x 100
		3 x 75, 5.5 x 100, 6.5 x 150

31216MR



6
PCS.



Contenu

0.56 1 / 20

31216MR		PH1 x 80, PH2 x 100
		5 x 75, 5 x 100, 6.5 x 100, 6.5 x 150

30117MR



7
PCS.



Contenu

0.72 1 / 20

30117MR		PH1 x 80, PH2 x 100
		3 x 75, 4 x 100, 5.5 x 125, 6.5 x 150, 8 x 175

30127MR



7
PCS.

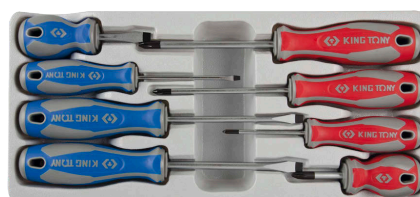


Contenu

0.82 1 / 20

30127MR		PZ1 x 80, PZ2 x 100, PZ3 x 150
		4 x 100, 5.5 x 125, 6.5 x 150, 8 x 175

33108MR



8
PCS.



Contenu

1.3 1 / 10

33108MR		PH0 x 60, PH1 x 100, PH2 x 100, PH2 x 38
		3 x 75, 5.5 x 100, 6.5 x 38, 6.5 x 100

Jeux de tournevis

- Lame en SNCM + V
- Poignée en PP + TPR
- Finition : lame polie, chromée, empreinte traitée noire

30317PR



7
PCS.



Contenu

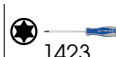


0.78



1 / 20

30317PR



1423

T10 x 75, T15 x 75, T20 x 100,
T25 x 100, T27 x 100, T30 x 125,
T40 x 150

30319PR



9
PCS.



Contenu

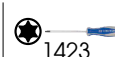


0.88



1 / 20

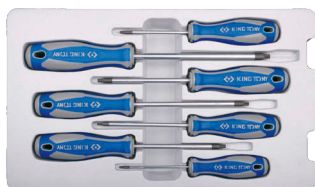
30319PR



1423

T8 x 75, T9 x 75, T10 x 75, T15 x 75,
T20 x 100, T25 x 100, T27 x 100,
T30 x 125, T40 x 150

30307PR



7
PCS.



Contenu



0.78



1 / 20

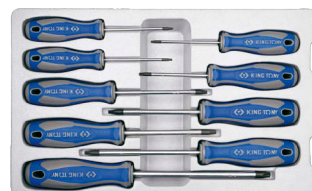
30307PR



1427

T10H x 75, T15H x 75, T20H x 100,
T25H x 100, T27H x 100,
T30H x 125, T40H x 150

30309PR



9
PCS.



Contenu



0.88



1 / 20

30309PR

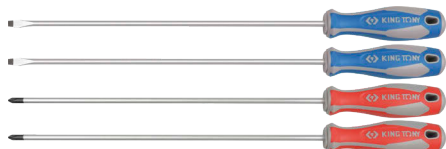


1427

T8H x 75, T9H x 75, T10H x 75,
T15H x 75, T20H x 100,
T25H x 100, T27H x 100,
T30H x 125, T40H x 150

30104MR

4
PCS.



Contenu



0.55



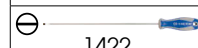
1 / 16

30104MR



1421

PH1 x 300, PH2 x 300



1422

5 x 300, 6.5 x 300

31003MR

3
PCS.



Contenu



0.55



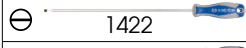
1 / 16

31003MR



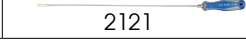
1421

PH2 x 300



1422

6.5 x 300

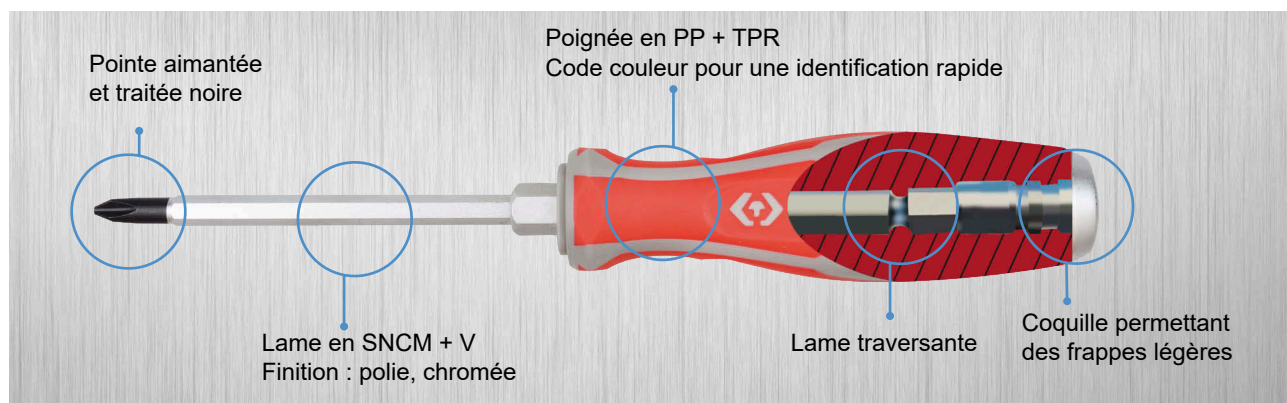


2121

5 x 305

Tournevis à lame traversante

- Lame en SNCM + V
- Poignée en PP +TPR
- Finition : lame polie, chromée, empreinte traitée noire



1461



- Empreinte PHILLIPS®, lame hexagonale traversante
- DIN ISO 8764

KING TONY	No.	mm		inch		mm	g	mm	mm
		mm	inch	mm	inch				
14610103R	PH1	75	3	5.0	110	12 / 96			
14610204R	PH2	100	4	6.0	125	12 / 96			
14610206R	PH2	150	6	6.0	144	12 / 144			
14610306R	PH3	150	6	8.0	206	12 / 144			



1462



- Empreinte pour vis à fente, lame hexagonale traversante
- DIN ISO 2380

KING TONY	mm		inch		mm	mm	mm	g	mm	mm
	mm	inch	mm	inch						
14625504R	5.5	7/32	1.0	100	4	5.0	113	12 / 96		
14626504R	6.5	1/4	1.2	100	4	6.0	132	12 / 96		
14626506R	6.5	1/4	1.2	150	6	6.0	155	12 / 144		
14620806R	8.0	5/16	1.2	150	6	8.0	219	12 / 144		
14620807R	8.0	5/16	1.2	175	7	8.0	216	12 / 144		
14621008	10	3/8	1.6	200	8	10	314	12 / 72		
14621210	12	15/32	2.0	250	10	10	346	10 / 40		



Jeux de tournevis

30204MR



4
PCS.

KING TONY	Contenu	kg	mm	mm
30204MR	1422	0.87	10 x 200, 12 x 250	1 / 20
	1462		10 x 200, 12 x 250	

30206MR



6
PCS.

KING TONY	Contenu	kg	mm	mm
30206MR	1461	1.2	PH1 x 75, PH2 x 100, PH3 x 150	1 / 20
	1462		5,5 x 100, 6,5 x 150, 8,0 x 175	

Présentoirs de tournevis

31416MR

- Présentoir de tournevis standard - PP + TPR



96
PCS.

Dimensions du présentoir vide : 600 x 240 x 210 mm

31416MRA 3.3 31416MRD 6.2

	Contenu	Qté de chq
31416MR	1421 PH0 x 60, PH1 x 80, PH1 x 100, PH2 x 38, PH2 x 100, PH2 x 150, PH3 x 150	6
	1422 3.0 x 75, 4.0 x 100, 5.5 x 75, 5.5 x 100, 5.5 x 125, 6.5 x 38, 6.5 x 100, 6.5 x 150, 8.0 x 150	

31516MR

- Présentoir de tournevis standard et de tournevis à lame traversante - PP + TPR



96
PCS.

Dimensions du présentoir vide : 600 x 240 x 210 mm

31516MRA 3.3 31516MRD 10.1

	Contenu	Qté de chq
31516MR	1427 T8H x 75, T9H x 75, T10H x 75, T15H x 75, T20H x 100, T25H x 100, T27H x 100, T30H x 125, T40H x 150	6
	1461 PH1 x 75, PH2 x 100, PH3 x 150	
	1462 5.5 x 100, 6.5 x 100, 6.5 x 150, 8.0 x 175	

31418MR

- Présentoir de tournevis standard - PP + TPR



18
PCS.

Dimensions du présentoir vide : 30 x 140 x 135 mm

Contenu

	Contenu	Qté de chq
31418MR	1421 PH1 x 100, PH2 x 100, PH3 x 150	3
	1422 4.0 x 100, 5.5 x 100, 8.0 x 200	

31318MR

- Présentoir de tournevis à lame traversante - PP + TPR



18
PCS.

Dimensions du présentoir vide : 30 x 140 x 135 mm

Contenu

	Contenu	Qté de chq
31318MR	1461 PH1 x 75, PH2 x 100, PH3 x 150	3
	1462 5.5 x 100, 6.5 x 150, 8.0 x 175	

31520MR

- Présentoir de tournevis standard et de tournevis à lame traversante - PP + TPR



120
PCS.

	Contenu	Qté de chq
31520MR	1421 PH0 x 60, PH1 x 100, PH2 x 38, PH2 x 100, PH2 x 150, PH3 x 150	6
	1422 3.0 x 75, 4.0 x 100, 5.5 x 100, 5.5 x 100, 5.5 x 150, 6.5 x 38, 6.5 x 100, 8.0 x 200	
	1461 PH1 x 75, PH2 x 100, PH3 x 150	
	1462 5.5 x 100, 6.5 x 150, 8.0 x 175	



Dimensions du présentoir vide : 725 x 265 x 240 mm

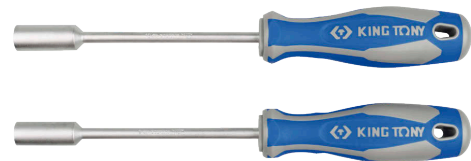


Tournevis emmanchés

- Lame en SNCM + V
- Poignée en PP +TPR
- Finition : lame polie, chromée

1450

KING TONY	mm	mm	mm	mm	g	PCS.
145004	4	4.5	125	225	70	12 / 144
145045	4.5	4.5	125	225	65	12 / 144
145005	5	5.0	125	225	75	12 / 144
145055	5.5	5.0	125	225	75	12 / 144
145006	6	6.0	125	225	75	12 / 144
145007	7	6.0	125	235	75	12 / 144
145008	8	7.0	125	235	100	12 / 144
145009	9	7.0	125	235	105	12 / 144
145010	10	8.0	125	235	105	12 / 144
145011	11	9.0	125	245	160	12 / 144
145012	12	10.0	125	245	160	12 / 144
145013	13	10.0	125	245	160	10 / 120



Jeux de tournevis emmanchés

- Lame en SNCM + V
- Poignée en PP +TPR
- Finition : lame polie, chromée

30119MR

KING TONY	Contenu	kg	PCS.
30119MR	1450	0.75	1 / 1
		4, 4.5, 5, 5.5, 6, 7, 8, 9, 10	



9
PCS.

30112MR

KING TONY	Contenu	kg	PCS.
30112MR	1450	1.22	1 / 1
		4, 4.5, 5, 5.5, 6, 7, 8, 9, 10, 11, 12, 13	



12
PCS.

Tournevis flexibles emmanchés

- Lame en Cr-V
- Poignée en PP+TPR
- Finition : lame polie, chromée

1453

- Pour les colliers de serrage à vis



	mm	mm	mm	mm		
145305	5	9	190	300	136	12 / 144
145306	6	9	190	300	135	12 / 144
145307	7	9.3	190	300	134	12 / 144
145308	8	9.5	190	300	133	12 / 144
145310	10	9.5	190	300	132	12 / 144

Tournevis porte-embout souple

- Poignée en PP + TPR

2150DF

1/4"

- Magnétique

	inch	mm	mm	
2150DF	1/4	170	280	140



Jeux de tournevis porte-embout souples

2504MR

1/4"

- les colliers de serrage

4
PCS.

Contenu		0.15	1 / 1
	2335M 6,7		
	770		
	2150DF		

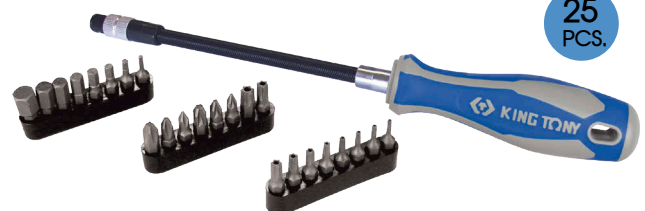


1025CQ

1/4"

25
PCS.

Contenu		0.3	1 / 30
	1025H H2, H3, H4, H5, H6, H7, H8, H10		
	1025P PH1, PH2, PH3		
	1025Z PZ1, PZ2, PZ3		
	1025U T7H, T8H, T9H, T10H, T15H, T20H, T25H, T27H, T30H, T40H		
	2150DF		



Poignée porte-lame

91232



mm inch



91232

135

5-1/4

84

12 / 144



Lames réversibles

1317

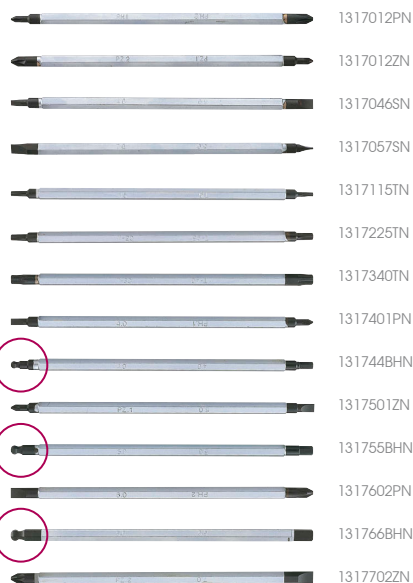


Dimensions

mm inch



		mm	inch		
1317012PN	⊕ PH1 ⊕ PH2	175	7	45	40 / 400
1317012ZN	⊕ PZ2 ⊕ PZ1	175	7	45	40 / 400
1317046SN	⊖ 4.0 ⊖ 6.0	175	7	45	40 / 400
1317057SN	⊖ 5.0 ⊖ 7.0	175	7	45	40 / 400
1317115TN	⊙ T10 ⊙ T15	175	7	45	40 / 400
1317225TN	⊙ T20 ⊙ T25	175	7	45	40 / 400
1317340TN	⊙ T30 ⊙ T40	175	7	45	40 / 400
1317401PN	⊖ 4.0 ⊕ PH1	175	7	45	40 / 400
131744BHN	⊙ H4 ⊙ H4	175	7	45	40 / 400
1317501ZN	⊖ 5.0 ⊕ PZ1	175	7	45	40 / 400
131755BHN	⊙ H5 ⊙ H5	175	7	45	40 / 400
1317602PN	⊖ 6.0 ⊕ PH2	175	7	45	40 / 400
131766BHN	⊙ H6 ⊙ H6	175	7	45	40 / 400
1317702ZN	⊖ 7.0 ⊕ PZ2	175	7	45	40 / 400



- Lame en SNCM + V
- Poignée en PP + TPR
- Finition : lame polie, chromée

Jeux de tournevis

32518MR

- Jeu de tournevis à lame réversible

Contenu



0.7



1 / 20

1317012PN	⊕ PH1		⊕ PH2
1317012ZN	⊕ PZ2		⊕ PZ1
1317046SN	⊖ 4.0		⊖ 6.0
1317057SN	⊖ 5.0		⊖ 7.0
1317115TN	⊙ T10		⊙ T15
1317225TN	⊙ T20		⊙ T25
1317340TN	⊙ T30		⊙ T40
131744BHN	⊙ H4		⊙ H4
131755BHN	⊙ H5		⊙ H5
131766BHN	⊙ H6		⊙ H6

91232



11
PCS.

Dimensions du coffret en plastique : 233 x 120 x 43 mm

Magnétiseur / démagnétiseur

79B101

- Magnétisez / démagnétisez rapidement les pointes de tournevis ou les embouts de vissage
- Magnétisez vos tournevis pour leur permettre de saisir de petites vis
- Démagnétisez vos tournevis pour travailler en toute sécurité sur l'électronique sensible



Dimensions
(mm)



79B101

52 x 50 x 30

88.6

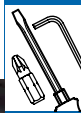
20 / 80



• Magnétiseur



• Démagnétiseur



Tournevis Inox et jeux

- Évite la dépose de particules faisant rouiller les vis
- Idéal pour l'agro-alimentaire, les chambres blanches, les laboratoires et les milieux médicaux

- Convient également pour tous les travaux d'extérieur
- Lame en acier inoxydable
- Poignée en PP + TPR

1421K



- Empreinte PHILLIPS®, lame ronde

	No.	mm		inch	mm	g	mm
14210132K	PH1	80		3	4.5	66	1 / 50
14210205K	PH2	125		5	6.1	99	1 / 50



1423K



- Empreinte TORX®, lame ronde

	Dim.	mm		inch	mm	g	mm
14231003K	T10	75		3	3.2	57	1 / 50
14231503K	T15	75		3	4.0	57	1 / 50
14232004K	T20	100		4	5.0	61	1 / 50
14232504K	T25	100		4	6.0	91	1 / 50
14233005K	T30	125		5	6.0	97	1 / 50
14234006K	T40	150		6	8.0	150	1 / 50



1428K



- Empreinte POZIDRIV®, lame ronde

	Dim.	mm		inch	mm	g	mm
14280132K	PZ1	80		3	4.5	51	1 / 50
14280205K	PZ2	125		4	6.0	86	1 / 50

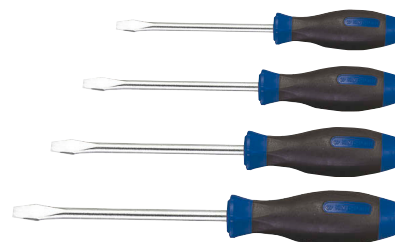


1422K



- Empreinte pour vis à fente, lame ronde

	mm		inch		mm	g	mm
14220404K	4.0	3/16	4.0	100	4	4.0	65
1422504K	5.5	7/32	5.0	125	5	5.0	87
14226506K	6.5	1/4	6.0	150	6	6.0	108
14220807K	8.0	5/16	8.0	175	8	8.0	170



30316PRK

	Contenu	g	mm	mm
30316PRK	T10 x 75, T15 x 75, T20 x 100, T25 x 100, T30 x 125, T40 x 150	0.86		1 / 20



6
PCS.

Embouts

1/4"

1/4"

1025P

- PHILLIPS®
- DIN ISO 2351-2



	N°		
102500P	PH0	4.5	20 / 200 (50 / 1000)
102501P	PH1	5.0	
102502P	PH2	5.5	
102503P	PH3	6.0	
102504P	PH4	6.0	

5025H

- 6 pans
- DIN ISO 2351-3



	inch		
502503H	3/64	4.0	20 / 200 (50 / 1000)
502504H	1/16	4.0	
502505H	5/64	4.5	
502506H	3/32	5.0	
502507H	7/64	5.0	
502508H	1/8	5.0	
502509H	9/64	5.0	
502510H	5/32	5.5	

1025S

- Pour vis à fente
- DIN ISO 2351-1



	Largueur de fente mm	Épaisseur de fente mm		
102503S1	3.0	0.5	4.5	20 / 200 (50 / 1000)
102535S1	3.5	0.6	4.5	
102504S1	4.0	0.5	4.5	
102504S2	4.0	0.8	5.0	
102545S1	4.5	0.6	5.0	
102505S1	5.0	0.8	5.0	
102555S1	5.5	0.8	5.0	
102555S2	5.5	1.0	5.0	
102506S1	6.0	1.0	5.0	
102565S1	6.5	1.2	5.5	
102507S1	7.0	1.2	5.5	
102508S1	8.0	1.2	6.0	
102508S2	8.0	1.6	6.0	

1025H

- 6 pans
- DIN ISO 2351-3



	mm		
102515H	H1.5	4.0	20 / 200 (50 / 1000)
102502H	H2	4.5	
102525H	H2.5	4.5	
102503H	H3	5.0	
102504H	H4	5.5	
102505H	H5	6.0	
102506H	H6	6.0	
102507H	H7	7.5	
102508H	H8	9.0	
102510H	H10	11.5	

1025T

- TORX®



	Dimension		
102506T	T6	4.5	20 / 200 (50 / 1000)
102507T	T7	4.5	
102508T	T8	4.5	
102509T	T9	4.5	
102510T	T10	4.5	
102515T	T15	5.0	
102520T	T20	5.0	
102525T	T25	5.0	
102527T	T27	5.0	
102530T	T30	5.0	
102535T	T35	5.6	
102540T	T40	6.0	
102545T	T45	7.0	
102550T	T50	8.0	

1025U

- RESISTORX®



	Dimension		
102507U	T7H	4.0	20 / 200 (50 / 1000)
102508U	T8H	4.5	
102509U	T9H	4.5	
102510U	T10H	4.5	
102515U	T15H	4.5	
102520U	T20H	5.0	
102525U	T25H	5.0	
102527U	T27H	5.0	
102530U	T30H	5.5	
102540U	T40H	5.5	



Embouts

- En acier au silicium (S2)
- Finition : sablée, huilée anti-rouille

1/4"

1/4"

1025M

- XZN®
- DIN 65254



Dimension	g	kg	kg
102504M	M4	5.0	20 / 200
102505M	M5	5.0	
102506M	M6	6.0	
102508M	M8	7.0	
102510M	M10	10.0	

1025R

- Carré



Dim.	g	kg	kg
102500R	RB0	4.5	20 / 200 (50 / 1000)
102501R	RB1	5.0	
102502R	RB2	5.5	
102503R	RB3	5.5	

1025V

- RESISTORX® Plus



Dim.	g	kg	kg
102508V	IPR 8	5.0	20 / 200
102509V	IPR 9	5.0	
102510V	IPR 10	5.0	
102515V	IPR 15	5.0	
102520V	IPR 20	5.0	
102525V	IPR 25	5.0	
102527V	IPR 27	5.0	
102530V	IPR 30	5.0	
102540V	IPR 40	6.4	
103540V	IPR 40	6.4	

1025Z

- POZIDRIV®
- DIN ISO 2351-2



N°	g	kg	kg
102501Z	PZ1	5.0	20 / 200 (50 / 1000)
102502Z	PZ2	5.5	
102503Z	PZ3	5.5	

1360PP

- PHILLIPS® / PHILLIPS®



N°	Longueur totale mm	g	kg
1360022P	PH2 / PH2	60	13.5
1360023P	PH2 / PH3	60	13.5

1360PS

- PHILLIPS® / pour vis à fente



N°	Largeur de fente mm	Épaisseur de fente mm	Longueur totale mm	g	kg
1360451P	PH1	4.5	0.6	60	13.0
1360552P	PH2	5.5	0.8	60	13.5
1360703P	PH3	7.0	1.2	60	13.5

1360ZS

- POZIDRIV® / pour vis à fente



N°	Largeur de fente mm	Épaisseur de fente mm	Longueur totale mm	g	kg
1360451Z	PZ1	4.5	0.6	60	13.0
1360552Z	PZ2	5.5	1.0	60	13.5
1360703Z	PZ3	7.0	1.2	60	13.5

1360ZZ

- POZIDRIV® / POZIDRIV®



N°	Longueur totale mm	g	kg
1360012Z	PZ1 / PZ2	60	13.0
1360022Z	PZ2 / PZ2	60	13.5
1360023Z	PZ2 / PZ3	60	13.5

Embouts

- En acier au silicium (S2)
- Finition : sablée, huilée anti-rouille

5/16"

5/16"

1800H

- 6 pans
- 32 / 36 mm



			Longueur totale mm		
183203H	H3		32	9.0	20 / 200
183204H	H4		32	9.6	20 / 200
183205H	H5		32	10.4	20 / 200
183206H	H6		32	11.0	20 / 200
183207H	H7		32	12.2	20 / 200
183208H	H8		32	13.4	20 / 200
183210H	H10		32	17.2	20 / 200
183212H	H12		32	21.7	12 / 120

1800P

- PHILLIPS®
- 36 / 80 / 125 mm
- DIN ISO 2251-2



			Longueur totale mm		
183601P	PH1		36	12	20 / 200
183602P	PH2		36	12	20 / 200
183603P	PH3		36	12	20 / 200
183604P	PH4		36	12	20 / 200
188002P	PH2		80	31	10 / 100
188003P	PH3		80	31	10 / 100
188004P	PH4		80	31	10 / 100

1800S

- Pour vis à fente
- 36 / 80 mm
- DIN ISO 2351-1



		Largueur de fente mm	Épaisseur de fente mm	Longueur totale mm		
183608S		8	1.2	36	11.5	20 / 200
183609S		9	1.6	36	13.0	20 / 200
183610S		10	1.6	36	14.5	20 / 200
183611S		11	2.0	36	16.0	20 / 200
183612S		12	2.0	36	17.5	12 / 120
183614S		14	2.0	36	20.5	12 / 120
188008S		8	1.2	80	32.0	10 / 100
188010S		10	1.6	80	33.0	10 / 100
188012S		12	2.0	80	34.0	6 / 60

1800T

- TORX®
- 32 / 36 / 70 mm

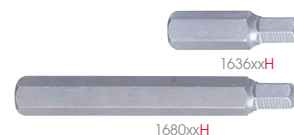


		N°	Longueur totale mm		
183215T	T15		32	10.0	20 / 200
183220T	T20		32	10.0	20 / 200
183225T	T25		32	10.0	20 / 200
183227T	T27		32	10.5	20 / 200
183230T	T30		32	10.5	20 / 200
183240T	T40		32	10.5	20 / 200
183245T	T45		32	10.5	20 / 200
183250T	T50		32	10.5	20 / 200
187015T	T15		70	22.0	10 / 100
187020T	T20		70	22.0	10 / 100
187025T	T25		70	22.0	10 / 100
187027T	T27		70	22.0	10 / 100
187030T	T30		70	22.0	10 / 100
187040T	T40		70	22.0	10 / 100
187045T	T45		70	22.0	10 / 100
187050T	T50		70	22.0	10 / 100

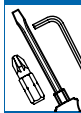
10mm

1600H

- 6 pans
- 36 / 80 mm



			Longueur totale mm		
163604H	H4		36	17.3	12 / 120
163605H	H5		36	18.6	12 / 120
163606H	H6		36	19.2	12 / 120
163607H	H7		36	20.1	12 / 120
163608H	H8		36	21.3	12 / 120
163609H	H9		36	23.0	12 / 120
163610H	H10		36	24.1	12 / 120
163612H	H12		36	30.5	12 / 120
168004H	H4		80	47.2	6 / 60
168005H	H5		80	48.0	6 / 60
168006H	H6		80	49.4	6 / 60
168007H	H7		80	50.3	6 / 60
168008H	H8		80	50.8	6 / 60
168009H	H9		80	52.0	6 / 60
168010H	H10		80	53.8	6 / 60
168012H	H12		80	72.9	6 / 60



Embouts

- En acier au silicium (S2)
- Finition : sablée, huilée anti-rouille

10mm

1600E

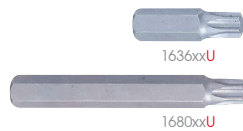
- TORX® Plus
- 36 / 80 mm



			Longueur totale (mm)		
163610E	IP10	36	15.4	12 / 120	
163615E	IP15	36	15.8	12 / 120	
163620E	IP20	36	15.6	12 / 120	
163625E	IP25	36	16.4	12 / 120	
163627E	IP27	36	17.4	12 / 120	
163630E	IP30	36	17.4	12 / 120	
163640E	IP40	36	18.4	12 / 120	
163645E	IP45	36	19.6	12 / 120	
163650E	IP50	36	20.6	12 / 120	
163655E	IP55	36	25.0	12 / 120	
163660E	IP60	36	31.4	12 / 120	
168010E	IP10	80	44.8	6 / 60	
168015E	IP15	80	45.2	6 / 60	
168020E	IP20	80	45.4	6 / 60	
168025E	IP25	80	46.0	6 / 60	
168027E	IP27	80	46.4	6 / 60	
168030E	IP30	80	46.6	6 / 60	
168040E	IP40	80	47.8	6 / 60	
168045E	IP45	80	49.0	6 / 60	
168050E	IP50	80	50.0	6 / 60	
168055E	IP55	80	60.2	6 / 60	
168060E	IP60	80	79.4	6 / 60	

1600U

- RESISTORX®
- 36 / 80 mm

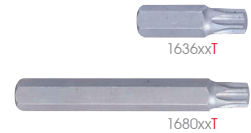


			Longueur totale (mm)		
163610U	T10H	36	16.9	12 / 120	
163615U	T15H	36	17.3	12 / 120	
163620U	T20H	36	17.6	12 / 120	
163625U	T25H	36	17.8	12 / 120	
163627U	T27H	36	18.2	12 / 120	
163630U	T30H	36	18.3	12 / 120	
163640U	T40H	36	19.9	12 / 120	
163645U	T45H	36	20.9	12 / 120	
163650U	T50H	36	22.9	12 / 120	
163655U	T55H	36	28.0	12 / 120	
163660U	T60H	36	32.6	12 / 120	
168010U	T10H	80	46.3	6 / 60	
168015U	T15H	80	46.5	6 / 60	
168020U	T20H	80	46.8	6 / 60	
168025U	T25H	80	47.1	6 / 60	
168027U	T27H	80	47.2	6 / 60	
168030U	T30H	80	47.2	6 / 60	
168040U	T40H	80	48.0	6 / 60	
168045U	T45H	80	49.1	6 / 60	
168050U	T50H	80	50.0	6 / 60	
168055U	T55H	80	52.3	6 / 60	
168060U	T60H	80	70.4	6 / 60	

10mm

1600T

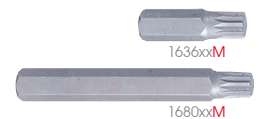
- TORX®
- 36 / 80 mm



			Longueur totale mm		
163610T	T10	36	16.9	12 / 120	
163615T	T15	36	17.3	12 / 120	
163620T	T20	36	17.6	12 / 120	
163625T	T25	36	17.8	12 / 120	
163627T	T27	36	18.2	12 / 120	
163630T	T30	36	18.3	12 / 120	
163640T	T40	36	19.9	12 / 120	
163645T	T45	36	20.9	12 / 120	
163650T	T50	36	22.9	12 / 120	
163655T	T55	36	28.0	12 / 120	
163660T	T60	36	32.6	12 / 120	
168010T	T10	80	46.3	6 / 60	
168015T	T15	80	46.5	6 / 60	
168020T	T20	80	46.8	6 / 60	
168025T	T25	80	47.1	6 / 60	
168027T	T27	80	47.2	6 / 60	
168030T	T30	80	47.2	6 / 60	
168040T	T40	80	48.0	6 / 60	
168045T	T45	80	49.1	6 / 60	
168050T	T50	80	50.0	6 / 60	
168055T	T55	80	52.3	6 / 60	
168060T	T60	80	70.4	6 / 60	

1600M

- XZN®
- 36 / 80 mm
















			Longueur totale (mm)		
163605M	M5	36	18.3	12 / 120	
163606M	M6	36	18.7	12 / 120	
163608M	M8	36	19.8	12 / 120	
163609M	M9	36	20.9	12 / 120	
163610M	M10	36	22.4	12 / 120	
163612M	M12	36	27.7	12 / 120	
163614M	M14	36	30.0	12 / 120	
168005M	M5	80	47.2	6 / 60	
168006M	M6	80	47.9	6 / 60	
168008M	M8	80	49.0	6 / 60	
168009M	M9	80	50.5	6 / 60	
168010M	M10	80	51.6	6 / 60	
168012M	M12	80	70.1	6 / 60	
168014M	M14	80	71.0	6 / 60	

Présentoirs d'embouts

87351P868

▪ Dimensions du présentoir : 318 x 235 x 183 mm

Contenu

1025S series	 1/4"		4x25 5.5x25 8x25	50 PCS. / Dim
1025P series	 1/4"		1x25 2x25 3x23	50 PCS. / Dim
1025Z series	 1/4"		1x25 2x25 3x23	50 PCS. / Dim
1025H series	 1/4"		4x25 5x25 6x23	50 PCS. / Dim
1025T series	 1/4"		T8x25 T10x25 T15x23 T20x25 T30x25	50 PCS. / Dim
75260	1/4"			4 PCS.
2142	1/4"			10 PCS.
75060	1/4"			4 PCS.

1/4"










868
PCS.



9301002MR

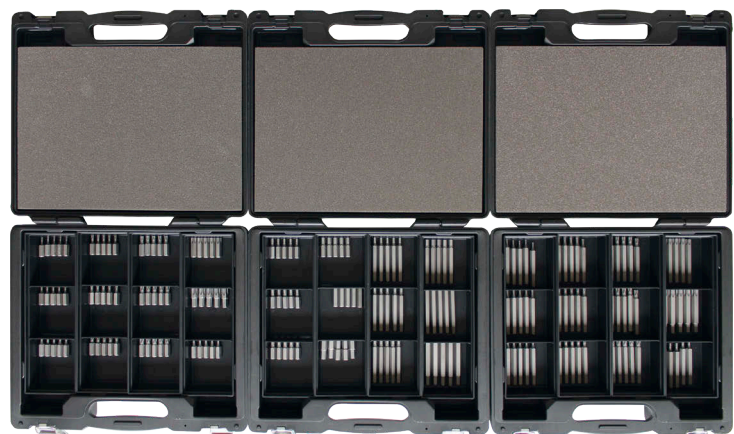
▪ Dimensions du présentoir : 422 x 372 x 92 (x3)

Contenu

1636T series	 10mm		T10, T15, T20, T25, T27, T30, T40, T45, T50, T55, T60	5 PCS. / Dim
1680T series	 10mm		T10, T15, T20, T25, T27, T30, T40, T45, T50, T55, T60	5 PCS. / Dim
1636H series	 10mm		4, 5, 6, 7, 8, 10, 12 mm	5 PCS. / Dim
1680H series	 10mm		4, 5, 6, 7, 8, 10, 12 mm	5 PCS. / Dim
847114B				3 PCS.

10mm

180
PCS.



Jeux d'embouts

- En acier au silicium (S2)
- Finition : sablée, huilée anti-rouille
- Longueur : 25 mm

1/4"

1003PQ

- PHILLIPS®



3
PCS.

Contenu 0.02 24 / 576

PH1,
PH2,
PH3



1025P

1003TQ

- TORX®



3
PCS.

Contenu 0.02 24 / 576

T8,
T10,
T15



1025T

1003TQ01

- TORX®



3
PCS.

Contenu 0.02 24 / 576

T20,
T25,
T30



1025T

1003LQ

- Pour vis à fente



3
PCS.

Contenu 0.02 24 / 576

4.5 x 0.6,
6.5 x 1.2,
8.0 x 1.2



1025S

1003MQ

- 6 pans



3
PCS.

Contenu 0.02 24 / 576

H4,
H5,
H6



1025H

1003ZQ

- POZIDRIV®



3
PCS.

Contenu 0.02 24 / 576

PZ1,
PZ2,
PZ3



1025Z

1008CQ

- RESISTORX® Plus

Contenu 0.073 1

101PR, 151PR, 201PR, 251PR, 271PR,
301PR, 401PR



1025V

751



8
PCS.

1/4"

Coffrets d'embouts















- En acier au silicium (S2)
- Finition : sablée, huilée anti-rouille

1/4"

1042CQ

Contenu

0.52 1 / 20

		1025H	H1.5, H2, H2.5, H3, H4, H5, H6, H7, H8, H10
		1025T	T6
		1025U	T7H, T8H, T9H, T10H, T15H, T20H, T25H, T27H, T30H, T40H
		1025S	3x0.5, 3.5x0.6, 4x0.5, 4.5x0.6, 5x0.8, 5.5x0.8, 6x1.0, 6.5x1.2, 7x1.2, 8x1.2
		1025P	PH0, PH1, PH2, PH3
		1025Z	PZ1, PZ2, PZ3
		1025R	RB0, RB1, RB2, RB3









42
PCS.

Dimensions du coffret en métal :
203 x 79 x 41 mm

1011MQ

Contenu

0.82 1 / 20

		1636M	M5, M6, M8, M10, M12
		1680M	M5, M6, M8, M10, M12
		414810M	









11
PCS.

Dimensions du coffret en métal :
198 x 105 x 37 mm

1015MQ

Contenu

0.96 1 / 20

		1636H	H4, H5, H6, H7, H8, H10, H12
		1680H	H4, H5, H6, H7, H8, H10, H12
		414810M	









15
PCS.

Dimensions du coffret en métal :
198 x 105 x 37 mm

1015PQ

Contenu

0.96 1 / 20

		1636T	T20, T25, T30, T40, T45, T50, T55
		1680T	T20, T25, T30, T40, T45, T50, T55
		414810M	



15
PCS.

Dimensions du coffret en métal :
198 x 105 x 37 mm



Coffrets d'embouts




- En acier au silicium (S2)
- Finition : sablée, huilée anti-rouille

10mm

1023EQ

Contenu

1.36 kg / 1 / 18

	1636E	10IP, 15IP, 20IP, 25IP, 27IP, 30IP, 40IP, 45IP, 50IP, 55IP, 60IP
	1680E	10IP, 15IP, 20IP, 25IP, 27IP, 30IP, 40IP, 45IP, 50IP, 55IP, 60IP
	414810M	

23
PCS.










Dimensions du coffret en métal :
244 x 118 x 37 mm

1043CQ

Contenu

2.5 kg / 1 / 10

	1636H	H4, H5, H6, H7, H8, H10, H12
	1636M	M5, M6, M8, M10, M12
	1636T	T20, T25, T27, T30, T40, T45, T50, T55, T60
	1680H	H4, H5, H6, H7, H8, H10, H12
	1680M	M5, M6, M8, M10, M12
	1680T	T20, T25, T27, T30, T40, T45, T50, T55, T60
	414710M	

43
PCS.










Dimensions du coffret en métal :
290 x 130 x 41 mm

1044CQ

Contenu

2.5 kg / 1 / 10

	1636H	H4, H5, H6, H7, H8, H10, H12
	1636M	M5, M6, M8, M10, M12
	1636T	T20, T25, T27, T30, T40, T45, T50, T55, T60
	1680H	H4, H5, H6, H7, H8, H10, H12
	1680M	M5, M6, M8, M10, M12
	1680T	T20, T25, T27, T30, T40, T45, T50, T55, T60
	314810M, 414810M	

44
PCS.











Dimensions du coffret en métal :
296 x 130 x 41 mm

1032CQ

Contenu

0.3 kg / 1 / 20

	1025S	3.0, 4.0, 5.0, 6.0
	1025P	PH1, PH2 x 2, PH3
	1025Z	PZ1, PZ2 x 2, PZ3
	1025T	T10, T15, T20, T25, T27, T30, T40
	1025H	H3, H4, H5, H6
	1025U	T10H, T15H, T20H, T25H, T27H, T30H, T40H
	770225	
	75363	

1/4"

32
PCS.



Dimensions du coffret en plastique :
120 x 70 x 42 mm

Coffrets d'embouts

- En acier au silicium (S2)
- Finition : sablée, huilée anti-rouille

1049CQ10

Contenu

0,51 kg 1 / 32

Dimensions du coffret en plastique : 150 x 103 x 46 mm

48
PCS.

⊖	1025S	4.0 x 2, 5.5 x 2, 6.5 x 2
⊕	1025P	PH1 x 2, PH2 x 2 (6 mm), PH2 x 2 (4.7 mm), PH3 x 2
⊕	1025Z	PZ1 x 2, PZ2 x 2, PZ3 x 2
⊗	1025T	T9, T10, T15, T20, T25, T27, T30, T40
⊙	1025H	H2, H2.5, H3, H4, H5, H6, H7, H8
⊗	1025U	T9H, T10H, T15H, T20H, T25H, T30H, T40H
■	1025R	RB1, RB2
○	2142	
○	75050A	
⊙	770225	



Jeux de tournevis à frapper

5/16"

4108FR

4111FR

4112FR

1/2"

Dimensions du coffret en métal : 190 x 60 x 48 mm



8
PCS.



6
PCS.



6
PCS.

4108FR

4111FR

4112FR

Contenu	kg	1 / 24
4108FR	1.04	1 / 24
4111FR	1.00	
4112FR	1.00	

4505MR

1/2"



Contenu

1.56 kg 1 / 12

○	4335MR	8, 10, 12, 14	⊖	1836S	9, 11	⊕	1836P	PH2, PH3	4112	414810S
---	--------	---------------	---	-------	-------	---	-------	----------	------	---------



10
PCS.

Dimensions du coffret en métal : 246 x 103 x 38 mm

Tournevis à cliquet

1/4"

2166DF

- Poignée articulée, idéale pour les endroits exigus et difficiles d'accès
- Poignée avec fonctions serrage / desserrage et verrouillage
- Poignée avec stockage pour 6 embouts
- Poignée en PC+TPR



Engrenage	Longueur totale (mm)	kg	6 / 72
2166DF 46 dents	167	0.28	6 / 72

32809MR

- Jeu de tournevis à cliquet réversible avec embout 1/4 "
- Poignée en PC+TPR

9 PCS.



Contenu	kg	6 / 72
1025S 4.0, 5.0	0.32	6 / 72
1025P PH1, PH2, PH3		
1025Z PZ1, PZ2		
75060		
2166DF		

2555MR

1/4"

- Coffret de tournevis à cliquet

55 PCS.

Contenu	kg	1 / 10
1025S 3.0, 4.0, 4.5, 5.0, 5.5, 6.0, 6.5, 8.0	1.0	1 / 10
1025P PH0, PH1, PH2, PH3		
1025Z PZ0, PZ1, PZ2, PZ3		
1025T T10, T15, T20, T25, T27, T30, T40		
1025H H2, H2.5, H3, H4, H5, H6, H8		
1025U T10H, T15H, T20H, T25H, T27H, T30H, T40H		
1025R RB1, RB2		
770225		
75060		
2166DF		
2335M 4, 4.5, 5, 5.5, 6, 7, 8, 9, 10, 11, 12, 13, 14		



Dimensions du coffret : 260 x 160 x 64 mm



Tournevis à cliquet

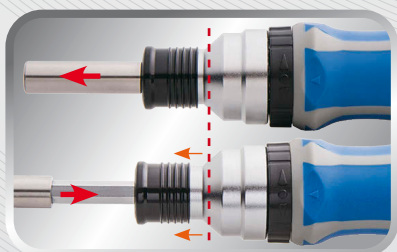
32808MR 1/4"

- Jeu de tournevis à cliquet 8 en 1
- Tournevis à cliquet réversible (couple maximum : 45 Nm)
- Cliquet 45 dents
- Porte-embout 1/4" magnétique
- Porte-embout télescopique atteignant 135 mm pour faciliter le travail dans les espaces confinés

8
PCS.



▪ Poignée ergonomique



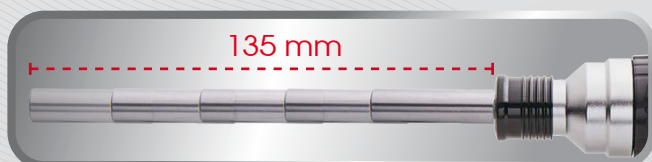
▪ Porte-embout magnétique télescopique



▪ Serrage, desserrage et verrouillage



▪ Poignée avec stockage pour 6 embouts



▪ Tournevis à cliquet télescopique

Contenu

⊕		1025P	PH1, PH2
⊕		1025Z	PZ2
⊖		1025S	4.0 x 0.5, 5.5 x 0.8, 6.5 x 1.2
		215506	
		2155DF	

0.27

1 / 48



Coffret cliquet paume de main 1/4"

P2746

1/4"

Contenu

0.15

⊖ 1025S 4.0 x 0.5, 5.5 x 0.8, 6.5 x 1.2

⊕ 1025P PH1, PH2 ∅ 6mm

⊗ 1025Z PZ2

2746



7
PCS.



1048MR

1/4"

Contenu

0.53 1 / 12

Dimensions du coffret en plastique : 150 x 102 x 46 mm

49
PCS.

⊖ 1025S 3.0 x 0.5, 4.0 x 0.5, 5.0 x 0.8, 6.0 x 1.0

⊕ 1025P PH1 x 2, PH2 x 2 ∅ 6mm, PH3, PH2 ∅ 4.7mm

⊗ 1025T T10, T15, T20 x 2, T25, T27, T30, T40

⊙ 1025H H3, H4, H5, H6

⊗ 1025U T15H, T20H x 2, T25H, T27H, T30H, T40H

⊗ 1025Z PZ2 x 2

⊗ 7150T T15, T20, T25,

⊕ 7150P PH2 x 2

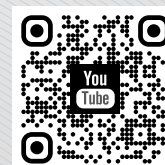
⊗ 7150Z PZ2

⊖ 7150S 4.0 x 0.8, 6.0 x 1.0

⊙ 7150H H3, H4, H5, H6, H7, H8

○ 750-75 1/4"

○ 753-63 1/4"



Coffret d'embouts de vissage et mini cliquet 1/4"

1026CQAM

Serie Atom

DESIGN BREVETÉ

26
PCS.



- Verrouillage de sécurité de la douille
- Convient pour une utilisation dans les espaces étroits

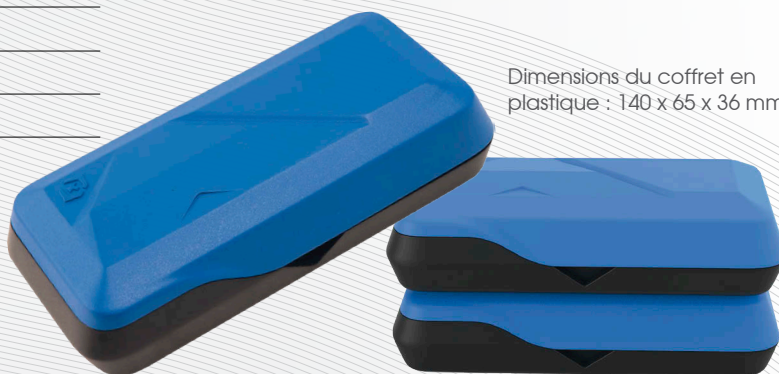


Contenu

0.39 1 / 40

	1025P	PH1, PH2, PH3
	1025Z	PZ1, PZ2, PZ3
	1025U	T10H, T15H, T20H, T25H, T30H
	1025H	H3, H4, H5, H6, H8
	1025T	T10, T15, T20, T25, T27, T30, T40
	7702-25	
	753-63	
	276B-35	

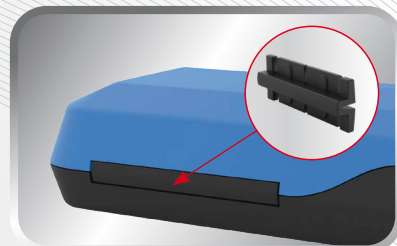
Dimensions du coffret en plastique : 140 x 65 x 36 mm



- Redressement automatique des rails d'embouts de vissage à l'ouverture du coffret (conception brevetée)



- Facile à ranger



- Axe de rotation intégré

Embout de vissage à gorge

1/4"

- En acier au silicium (S2)
- Finition : phosphaté, huilé anti-rouille
- Magnétique

7100P

- PHILLIPS®
- Gorge courte (9.5 mm)
- DIN ISO 2351-2



			Longueur totale (mm)		
715000P	PH0		50	8.5	10 / 100
715001P	PH1		50	9.0	
715002P	PH2		50	11.0	
715003P	PH3		50	11.0	
715004P	PH4		50	14.0	
716502P	PH2		65	15.5	
717001P	PH1		70	16.5	
717002P	PH2		70	17.0	
717003P	PH3		70	17.0	
719001P	PH1		90	18.0	
719002P	PH2		90	20.0	
719003P	PH3		90	20.2	
711002P	PH2		100	24.0	
711501P	PH1		150	23.0	
711502P	PH2		150	33.0	
711503P	PH3		150	33.0	

7100H

- 6 pans
- DIN ISO 2351-3



			Longueur totale (mm)		
715002H	H2		50	6	10 / 100
715025H	H2.5		50	6	10 / 100
715003H	H3		50	6	10 / 100
715004H	H4		50	9	10 / 100
715005H	H5		50	10	10 / 100
715006H	H6		50	11	10 / 100
715007H	H7		50	13	10 / 100
715008H	H8		50	17	10 / 100

7100Z

- POZIDRIV®
- DIN ISO 2351-2



			Longueur totale (mm)		
715001Z	PZ1		50	9.0	10 / 100
715002Z	PZ2		50	11.0	
715003Z	PZ3		50	12.5	
717001Z	PZ1		70	11.0	
717002Z	PZ2		70	15.5	
717003Z	PZ3		70	15.5	
719001Z	PZ1		90	13.0	
719002Z	PZ2		90	19.5	
719003Z	PZ3		90	19.5	
711501Z	PZ1		150	33	
711502Z	PZ2		150	33	
711503Z	PZ3		150	33	

7150S

- Pour vis à fente
- DIN ISO 2351-1



		Largueur de fente mm	Épaisseur de fente mm	Longueur totale mm		
715003S1		3.0	0.5	50	6.0	10 / 100
715035S1		3.5	0.5	50	6.5	
715004S2		4.0	0.5	50	7.0	
715004S1		4.0	0.8	50	7.0	
715045S1		4.5	0.6	50	7.0	
715005S1		5.0	0.8	50	8.0	
715055S1		5.5	0.8	50	8.5	
715055S2		5.5	1.0	50	8.5	
715006S1		6.0	1.0	50	8.5	
715065S1		6.5	1.2	50	9.0	

7100T

- TORX®
- 50 / 70 / 110 / 150 mm



		Dim.	Longueur totale (mm)		
715006T	T6		50	5.0	10 / 100
715007T	T7		50	5.0	
715008T	T8		50	5.5	
715009T	T9		50	5.5	
715010T	T10		50	6.0	
715015T	T15		50	6.0	
715020T	T20		50	7.5	
715025T	T25		50	8.0	
715027T	T27		50	9.5	
715030T	T30		50	9.5	
715040T	T40		50	10.0	
715050T	T50		50	15.0	
717006T	T6		70	7.0	
717007T	T7		70	7.0	
717008T	T8		70	7.5	
717009T	T9		70	7.5	
717010T	T10		70	8.0	
717015T	T15		70	8.0	
717020T	T20		70	10.5	
717025T	T25		70	11.0	
717027T	T27		70	14.0	
717030T	T30		70	14.0	
717040T	T40		70	15.5	
711506T	T6		150	16.3	
711507T	T7		150	16.5	
711508T	T8		150	16.5	
711509T	T9		150	16.7	
711510T	T10		150	17.8	
711515T	T15		150	18.0	
711520T	T20		150	24.0	
711525T	T25		150	24.0	
711527T	T27		150	32.0	
711530T	T30		150	33.0	
711540T	T40		150	39.0	
718920T	T20		89	33.0	
718925T	T25		89	33.0	
718930T	T30		89	33.0	
718940T	T40		89	33.0	

Embout de vissage à gorge

- En acier au silicium (S2)
- Finition : phosphaté, huilé anti-rouille
- Magnétique

1/4"

7150R

- Carré



Icon	Dim.	Longueur totale (mm)	Icon	Icon
715000R	RB0	50	7.5	10 / 100
715001R	RB1	50	8.0	
715002R	RB2	50	8.5	
715003R	RB3	50	8.5	

2128PR

- Embouts RESISTORX® et support poignée en L



7 PCS.

Contenu

Icon	No.	Icon	Icon
7100T	T10H, T15H, T20H, T25H, T27H, T30H, T40H	0.17	10 / 60
158902			

2138PR

- Embouts 6 pans et support poignée en L



7 PCS.

Contenu

Icon	No.	Icon	Icon
7150H	H2, H3, H4, H5, H6, H7, H8	0.24	10 / 60
158902ERA			

5mm

7200P

- Tête longue
- PHILLIPS® / PHILLIPS®



Icon	No.	Longueur totale (mm)	Icon	Icon
726502P	PH2	65	8.5	10 / 100
727502P	PH2	75	10.0	
721102P	PH2	110	14.5	

- En acier au silicium (S2)
- Finition : nickel
- Magnétique

1/4"

7300P

- Tête longue
- PHILLIPS® / PHILLIPS®



Icon	No.	Longueur totale (mm)	Icon	Icon
734501P	PH1	45	9.0	10 / 100
734502P	PH2	45	9.0	
734503P	PH3	45	10.0	
736501P	PH1	65	14.0	
736502P	PH2	65	14.0	
736503P	PH3	65	14.5	
731101P	PH1	110	26.0	
731102P	PH2	110	26.0	
731103P	PH3	110	26.5	
731502P	PH2	150	32.0	
731503P	PH3	150	33.0	

7400P

- Tête courte
- PHILLIPS® / PHILLIPS®



Icon	No.	Longueur totale (mm)	Icon	Icon
745002P	PH2	50	11.0	10 / 100
747501P	PH1	75	16.5	
747502P	PH2	75	15.0	
747503P	PH3	75	16.5	
741002P	PH2	100	23.5	
741502P	PH2	150	37.5	
742002P	PH2	200	50.0	10 / 40
743002P	PH2	300	70.0	
743003P	PH3	300	77.0	

1300PN

- Tête longue
- PHILLIPS® / PHILLIPS®



Icon	No.	Longueur totale (mm)	Icon	Icon
136501P	PH1	65	14.0	10 / 200
136502P	PH2	65	14.0	10 / 200
136503P	PH3	65	14.0	10 / 200



Porte-embouts

- Cr-V et acier inoxydable
- Finition : sablée, huilée anti-rouille
- Magnétique

1/4"

750

- Porte-embout magnétique
- 750-50A: avec clip à ressort
- DIN 7427



	inch	Longueur totale (mm)		
75060	1/4	60	20.5	6 / 84
75075	1/4	75	30.4	20 / 400
750100	1/4	100	37.2	20 / 400
750150	1/4	150	50.8	20 / 240

751

- Porte-embout magnétique
- Avec clip à ressort
- DIN 7427



	inch	Longueur totale (mm)		
75160	1/4	60	24	6 / 84
75175	1/4	75	36	6 / 84

752

- Porte embout magnétique
- Avec verrouillage de sécurité
- DIN 7427



	inch	Longueur totale (mm)		
75260	1/4	63	33	6 / 72
75275	1/4	75	32	30 / 600
752100	1/4	100	38.7	20 / 400
752150	1/4	150	52	20 / 240
752300	1/4	300	92.5	20 / 160

75363

- Porte-embout magnétique
- Avec verrouillage de sécurité
- DIN 7427



	inch	Longueur totale (mm)		
75363	1/4	63	33	6 / 72

754

- Porte-embout avec cardan
- Inclinaison de 20°

- Peut être utilisé en mode droit ou avec cardan

	Dim. inch	Longueur totale (mm)		
75490	1/4	90	52.8	20 / 400



755

- Porte-embout avec verrouillage de sécurité.
- Corps flexible.
- Le porte-embout flexible s'adapte à tous les embouts hexagonaux 1/4" d'une longueur minimum de 50mm.



	Dim. inch	Longueur totale (mm)		
755300	1/4	300	293	20 / 60
755400	1/4	400	385	18 / 36



Verrouillage de sécurité



Porte embout magnétique



Convient aux embouts 1/4" et d'une longueur minimum à 50 mm.

Adaptateur à renvoi d'angle

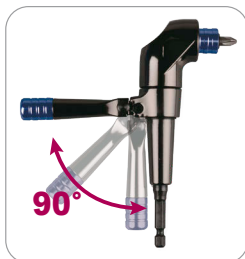
1/4"

- Corps en acier zingué.
- Poignée en chrome vanadium
- Mandrin en aluminium
- Magnétique

759

- Adaptateur 1/4" à renvoi d'angle pour visseuse
- Conçu pour les travaux intensifs dans des espaces restreints ou difficiles d'accès
- Poignée 24 positions
- Pour visseuses de 18 à 24V
- Mandrin acceptant tous les embouts 1/4", meules et bonnets de lustre
- Emplacement pour stocker un embout dans la poignée

Code	Dim. Inch	Longueur totale (mm)	Poids (kg)	Contenance
759140	1/4	140	305	12 / 48



Inclinable



Poignée 24 positions



759140S

- Présentoir d'adaptateurs à renvoi d'angle

Contenu


759  10 PCS.



759140MR

- RESISTORX® Plus

Contenu  0.37  1

 251PR 1025V 8IPR, 10IPR, 15IPR, 20IPR, 25IPR, 27IPR, 30IPR, 40IPR

 759



Douilles pour tige filetée

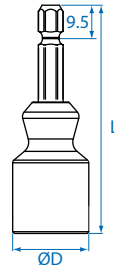
1/4"

- Cr-V et acier inoxydable
- Finition : sablée, huilée anti-rouille

75A1

- Installation de la tige par serrage ou desserrage
- Blocage de la tige automatique
- N'endommage pas les filets

	Dimensions		D mm	L mm	Capacité Ø mm	⚖	📦
	mm	inch					
75A105M	5	3/16	20	66	5.1~4.5	60	6 / 120
75A106M	6	1/4	24	66	6.1~5.6	75	6 / 96
75A108M	8	5/16	24	66	8.1~7.6	74	6 / 96
75A110M	10	3/8	28	66	10.1~9.3	99.8	6 / 96
75A112M	12	1/2	28	66	11.4~12.7	98.8	6 / 96
75A114M	14	9/16	34	66	14.1~13.2	126.6	5 / 60
75A116M	16	5/8	34	66	16.1~15.0	125.8	5 / 60



Embouts de vissage avec douille

1/4"

- Cr-V et acier inoxydable
- Finition : sablée, huilée anti-rouille

760M

- Embouts pour visseuse avec douille 6 pans
- Non magnétique
- DIN 3126



	Ø mm	Longueur totale (mm)	⚖	📦
7606512M	12	65	50	6 / 72
7607510M	10	75	38.4	6 / 72
7601008M	8	100	40	5 / 20
7601010M	10	100	60	5 / 20
7601012M	12	100	61	5 / 20
7601013M	13	100	70	5 / 20

761M

761S

- Embouts pour visseuse avec douille 6 pans
- Magnétique
- DIN 3126



	Ø mm	Longueur totale (mm)	⚖	📦
7611010M	10	100	54	5 / 25
7611012M	12	100	68	5 / 25
7611507M	7	150	65	5 / 25
7611508M	8	150	67	5 / 25
7616505M	5	65	27	6 / 84
7616506M	6	65	26	6 / 84
7616507M	7	65	25	6 / 84
7616508M	8	65	30	6 / 84
7616510M	10	65	37	6 / 72
7616513M	13	65	54	6 / 72

	Ø inch	Longueur totale (mm)	⚖	📦
7616512S	3/8	65	37	6 / 72

Embouts de vissage porte-douille

1/4"

- Cr-V et acier inoxydable
- Finition : sablée, huilée anti-rouille

770

- Porte-douilles
- Retenue de la douille par bille
- DIN 7428

	Dim.	Longueur totale (mm)	⚖	📦
770225	1/4"	25	6.0	20 / 200
770250	1/4"	50	13.5	10 / 100
770275	1/4"	75	23.5	10 / 100
770350	3/8"	50	23.5	6 / 84
770450	1/2"	50	24.0	6 / 72



Jeux d'embouts de vissage à gorge

1010MQ01

Dimensions du coffret en métal :
200 x 65 x 50 mm

10
PCS.





Contenu			kg 0.71	1 / 24
⊖		7150S	6.5, 5.5, 4.5	
⊕		7100P	PH1, PH2, PH3	
⊕		7100Z	PZ1, PZ2, PZ3	
●		75060		

1010PQ01

Dimensions du coffret en métal :
200 x 65 x 50 mm

10
PCS.







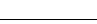

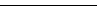



Contenu			kg 0.69	1 / 24
⊕		7100T	T8, T9, T10, T15, T20, T25, T27, T30, T40	
●		75060		

1049CQ10

1/4"

48
PCS.

Contenu			kg 0.51	1 / 32
⊕		1025P	PH1 x 2, PH2 x 2 ø 6mm, PH2 x 2 ø 4.7mm, PH3 x 2	
⊖		1025S	4.0 x 2, 5.5 x 2, 6.5 x 2	
●		1025H	H2, H2.5, H3, H4, H5, H6, H7, H8	
⊕		1025Z	PZ1 x 2, PZ2 x 2, PZ3 x 2	
⊕		1025U	T9H, T10H, T15H, T20H, T25H, T30H, T40H	
⊕		1025T	T9, T10, T15, T20, T25, T27, T30, T40	
●		1025R	RB1, RB2	
○		2141		
○		75050A		
■		770225		



Dimensions du coffret en plastique :
150 x 103 x 46 mm

Clés mâles coudées

- En SNCM + V
- Finition : polie, chromée

1145MR

- Version standard
- 6 pans
- DIN ISO 2936



	mm	mm	mm			
114515MR	H1.5	15.5	46.5	0.9	20 / 400	
114502MR	H2	18.0	52.0	1.8	20 / 400	
114525MR	H2.5	20.5	58.5	3.0	20 / 400	
114503MR	H3	23.5	66.0	5.0	20 / 400	
114504MR	H4	29.5	74.0	10.0	20 / 400	
114505MR	H5	33.0	85.0	18.0	20 / 400	
114555MR	H5.5	35.5	90.5	24.0	10 / 400	
114506MR	H6	38.0	96.5	30.0	10 / 200	
114507MR	H7	41.0	102	45.0	10 / 200	
114508MR	H8	44.0	108	60.0	10 / 200	
114510MR	H10	50.0	122	105.0	10 / 200	

1125MR

- Version longue
- 6 pans
- DIN ISO 2936



	mm	mm	mm			
112515MR	H1.5	15.5	91.5	1.5	20 / 400	
112502MR	H2	18.0	102	3.0	20 / 400	
112525MR	H2.5	20.5	114.5	5.0	20 / 400	
112503MR	H3	23.0	129	8.0	20 / 300	
112504MR	H4	29.0	144	18.0	20 / 300	
112505MR	H5	33.0	165	31.0	20 / 300	
112506MR	H6	38.0	186	51.0	20 / 400	
112507MR	H7	41.0	197	78.0	20 / 400	
112508MR	H8	44.0	208	104.0	10 / 100	
112510MR	H10	50.0	234	182.0	10 / 100	
112512MR	H12	57.0	262	290.0	8 / 48	
112514MR	H14	70.0	294	451.0	8 / 48	
112517MR	H17	80.0	337	770.0	4 / 32	
112519MR	H19	89.0	380	863.0	4 / 16	
112522MR	H22	102.0	422	1590.0	4 / 16	

Clés mâles coudées phosphatées

- En SNCM + V
- Finition : phosphatée

1145MZY

- Type bras standard
- Tête Allen



	mm	mm	mm			
114515MZY	H1.5	15	46	0.7	250 / 6000	
114502MZY	H2	17	51	1.3	100 / 3600	
114525MZY	H2.5	20	58	3	100 / 2400	
114503MX	H3	23	65	6	1 / 4000	
114504MZY	H4	28	73	10	50 / 1200	
114505MZY	H5	33	85	18	30 / 720	

1125SR

	inch	mm	mm			
112502SR	1/16	15.5	91.5	1.7	20 / 400	
112525SR	5/64	18	102	3.0	20 / 400	
112503SR	3/32	21	114.5	5.0	20 / 400	
112504S	1/8	23	129	8.0	20 / 400	
112505S	5/32	29	144	18.0	20 / 300	
112506SR	3/16	33	165	31.0	20 / 300	
112508S	1/4	38	186	51.0	10 / 100	
112510S	5/16	44	208	104.0	10 / 100	
112512S	3/8	50	234	182.0	10 / 100	
112516S	1/2	57	262	290.0	8 / 48	
112518S	9/16	70	294	451.0	8 / 48	



Jeux de clés mâles

- En SNCM + V
- Finition : polie, chromée

20218MR



8
PCS.

Spec.	Contenu	0.33	12 / 72
Sur monture	● H2, H2.5, H3, H4, H5, H6, H8, H10		

20219MR



9
PCS.

Spec.	Contenu	0.33	6 / 48
Standard	● 1145MR H1.5, H2, H2.5, H3, H4, H5, H6, H8, H10		

20208MR

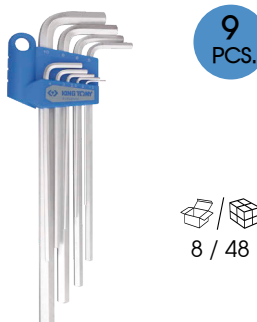


8
PCS.

8 / 48

Spec.	Contenu	0.43
Extra long	● 1125MR H2, H2.5, H3, H4, H5, H6, H8, H10	

20209MR



9
PCS.

8 / 48

Spec.	Contenu	0.49
Extra long	● 1125MR H1.5, H2, H2.5, H3, H4, H5, H6, H8, H10	

20209SR02



9
PCS.

8 / 48

Spec.	Contenu	0.47
Extra long	● 1125SR H1/16, 5/64, 3/32, 1/8, 5/32, 3/16, 1/4, 5/16, 3/8	

20210MR



10
PCS.

Spec.	Contenu	0.47	1 / 6
Extra long	● 1125MR H3, H4, H5, H6, H7, H8, H10, H12, H14, H17		

20208MR01



8
PCS.

	Spec.	Contenu	1.25	1 / 20
20208MR01	Extra long	● 1125MR H3, H4, H5, H6, H8, H10, H12, H14		
20208SR01		● 1125SR 1/8, 5/32, 3/16, 1/4, 5/16, 3/8, 1/2, 9/16		

Clés mâles XZN® coudées et jeux

- En SNCM + V
- Finition : polie, chromée

1146M

- Version standard
- XZN®



	Dim.	mm	mm	kg	pcs
114605M	M5	29	83	15.6	20 / 320
114606M	M6	33	90	24.8	20 / 320
114608M	M8	39	98	47	10 / 300
114610M	M10	44	111	83.6	10 / 200
114612M	M12	53	126	127	10 / 180

1126M

- Version extra longue
- XZN®



	Dim.	mm	mm	kg	pcs
112605M	M5	33	165	28.2	20 / 300
112606M	M6	38	186	46.4	20 / 300
112608M	M8	44	208	90	10 / 100
112610M	M10	50	234	159.6	10 / 100
112612M	M12	53	264	237.8	10 / 80

20505PR01



5 PCS.

	Spec.	Contenu	kg	pcs
20505PR01	Standard	M5, M6, M8, M10, M12	0.333	6 / 54

20515PR01



5 PCS.

	Spec.	Contenu	kg	pcs
20515PR01	Extra longue	M5, M6, M8, M10, M12	0.632	4 / 32

Clés mâles coudées à tête sphérique

1130MR 1130S

- Version longue à tête sphérique
- DIN ISO 2936



	mm	mm	mm	kg	pcs
113015MR	H1.5	15.5	63.5	1.4	20 / 400
11302MR	H2	18.0	77.0	2.0	20 / 400
113025MR	H2.5	20.5	87.5	4.0	20 / 400
113003MR	H3	23.0	93.0	7.0	20 / 400
113004MR	H4	29.0	104	14.0	20 / 400
113005MR	H5	33.0	120	25.0	20 / 300
113006MR	H6	38.0	141	41.0	10 / 150
113008MR	H8	44.0	158	84.0	10 / 150
113010MR	H10	50.0	180	145.0	10 / 150

	inch	mm	mm	kg	pcs
113002SR	1/16	15.5	78.5	1.4	20 / 400
113025SR	5/64	18.0	85.0	4.0	20 / 400
113003S	3/32	20.5	87.5	3.6	20 / 400
113004S	1/8	23.0	93.0	7.4	20 / 400
113005S	5/32	29.0	104	14.0	20 / 400
113006S	3/16	33.0	120	24.0	10 / 300
113007S	7/32	35.5	130	33.0	10 / 150
113008S	1/4	38.0	141	44.0	10 / 150
113010S	5/16	44.0	158	82.0	10 / 150
113012S	3/8	50.0	180	138.0	10 / 150

1120MR

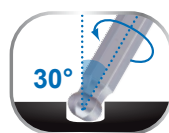
- Version extra longue à tête sphérique



112015MR	H1.5	15.5	91.5	1.5	20 / 400
112002MR	H2	18.0	102	3.0	20 / 400
112025MR	H2.5	20.5	114.5	5.0	20 / 400
112003MR	H3	23.0	129	8.0	20 / 300
112004MR	H4	29.0	144	18.0	20 / 300

112005MR	H5	33.0	165	31.0	20 / 300
112006MR	H6	38.0	186	51.0	20 / 400
112007MR	H7	41.0	197	78.0	20 / 400
112008MR	H8	44.0	208	104.0	10 / 100
112010MR	H10	50.0	234	182.0	10 / 100

Jeux de clés mâles à tête sphérique



- En SNCM + V
- Finition : polie, chromée

20107MR01



7 PCS.

Spec.	Contenu	kg 0.37	10 / 60
Longue / sphérique	1130MR	H2.5, H3, H4, H5, H6, H8, H10	

20107SR



7 PCS.

Spec.	Contenu	kg 0.36	10 / 60
Longue / sphérique	1130SR	3/32, 1/8, 5/32, 3/16, 1/4, 5/16, 3/8	

20108MR



8 PCS.

Spec.	Contenu	kg 0.43	8 / 48
Extra longue / sphérique	1120MR	H2, H2.5, H3, H4, H5, H6, H8, H10	

20109MR



9 PCS.

Spec.	Contenu	kg 0.49	8 / 48
Extra longue / sphérique	1120MR	H1.5, H2, H2.5, H3, H4, H5, H6, H8, H10	

20119MR01



9 PCS.

Spec.	Contenu	kg 0.45	8 / 48
Extra longue / sphérique	1120MR	H1.5, H2, H2.5, H3, H4, H5, H6, H7, H8	

20110MR



9 PCS.

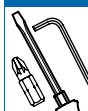
Spec.	Contenu	kg 0.39	6 / 60
Longue / sphérique	1130MR	H1.5, H2, H2.5, H3, H4, H5, H6, H8, H10	

20129SR



9 PCS.

Spec.	Contenu	kg 0.39	6 / 60
Longue / sphérique	1130SR	1/16, 3/32, 1/8, 5/32, 3/16, 1/4, 5/16, 3/8, 5/64	



Clés mâles coudées TORX® et RESISTORX®

- En SNCM + V
- Finition : polie, chromée

1143R



- Version standard
- TORX®

	Dim.				
114310R	T10	18	50.0	3.5	20 / 400
114315R	T15	20	55.5	5.5	20 / 400
114320R	T20	24	61.5	8.0	20 / 400
114325R	T25	26	67.5	11.0	20 / 400
114327R	T27	30	75.5	15.0	20 / 400
114330R	T30	36	85.5	24.5	10 / 200
114340R	T40	41	96.5	39.0	10 / 200
114345R	T45	46	107	57.0	10 / 200
114350R	T50	52	122	80.0	10 / 200

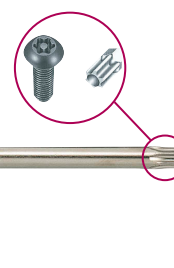


1147R



- Version standard
- RESISTORX®

	Dim.				
114710R	T10H	18	50.0	3.5	20 / 400
114715R	T15H	20	55.5	5.5	20 / 400
114720R	T20H	24	61.5	8.0	20 / 400
114725R	T25H	26	67.5	11.0	20 / 400
114727R	T27H	30	75.5	15.0	20 / 400
114730R	T30H	36	85.5	24.5	10 / 200
114740R	T40H	41	96.5	39.0	10 / 200
114745R	T45H	46	107	57.0	10 / 200
114750R	T50H	52	122	80.0	10 / 200



1123R



- Version extra longue
- TORX®

	Dim.				
112310R	T10	18	91.5	5.8	20 / 400
112315R	T15	20	103	8.8	20 / 400
112320R	T20	22	115	12.9	20 / 400
112325R	T25	25	130	18.4	20 / 300
112327R	T27	29	145.5	25.6	20 / 300
112330R	T30	35	165	42.2	20 / 300
112340R	T40	40	182	63.5	10 / 100
112345R	T45	45	202	92.4	10 / 100
112350R	T50	49	225	130.6	10 / 100



1127R



- Version extra longue
- RESISTORX®

	Dim.				
112710R	T10H	18	91.5	5.6	20 / 400
112715R	T15H	20	103	8.6	20 / 400
112720R	T20H	22	115	12.4	20 / 400
112725R	T25H	25	130	17.8	20 / 300
112727R	T27H	29	145.5	24.6	20 / 300
112730R	T30H	35	165	40.4	20 / 300
112740R	T40H	40	182	61.6	10 / 100
112745R	T45H	45	202	89.0	10 / 100
112750R	T50H	49	225	126.2	10 / 100



Jeux de clés mâles coudées TORX® et RESISTORX®

- En SNCM + V
- Finition : polie, chromée

20407PR



Spec.	Contenu	0.13 15 / 120
Standard	1147R	T10H, T15H, T20H, T25H, T27H, T30H, T40H

20308PR



Spec.	Contenu	0.20 12 / 72
Sur montage	T9, T10, T15, T20, T25, T27, T30, T40	

20309PR



Spec.	Contenu	0.3 6 / 48
Standard	1143R	T10, T15, T20, T25, T27, T30, T40, T45, T50

20409PR



Spec.	Contenu	0.34 6 / 48
Standard	1147R	T10H, T15H, T20H, T25H, T27H, T30H, T40H, T45H, T50H

20319PR

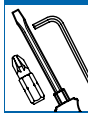


Spec.	Contenu	0.45 8 / 48
Extra longue	1123R	T10, T15, T20, T25, T27, T30, T40, T45, T50

20419PR



Spec.	Contenu	0.47 8 / 48
Extra longue	1127R	T10H, T15H, T20H, T25H, T27H, T30H, T40H, T45H, T50H

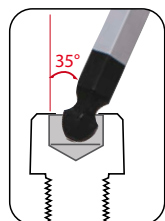


Jeu de clés mâles 6 pans à tête sphérique

- En SNCM + V
- Finition : polie, chromée

201B09MR

- Jeu de clés mâles à tête sphérique, version longue, empreinte pour vis 6 pans

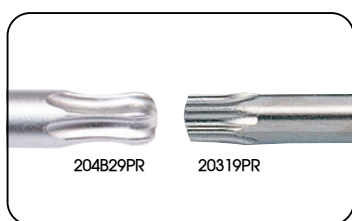
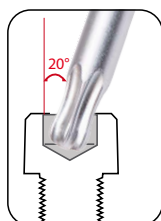


	PCS.	Spec.	Contenu	Kg	8 / 48
201B09MR	9	Extra longue / sphérique	H1.5, H2, H2.5, H3, H4, H5, H6, H8, H10	0.45	8 / 48

Jeu de clés mâles TORX® à tête sphérique

204B29PR

- Jeu de clés mâles à tête sphérique, version longue, empreinte pour vis TORX®



	PCS.	Spec.	Contenu	Kg	6 / 48
204B29PR	9	Standard	T10, T15, T20, T25, T27, T30, T40, T45, T50	0.37	6 / 48



Présentoirs cartons pour jeux de clés mâles coudées

PRTCMDIV12

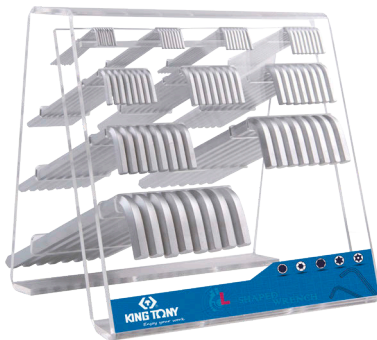


12
jeux

Contenu

20109MR	Extra long	1.5, 2, 2.5, 3, 4, 5, 6, 8, 10	4 jeux
20110MR	Long	1.5, 2, 2.5, 3, 4, 5, 6, 8, 10	4 jeux
20319PR	Extra long	T10, T15, T20, T25, T27, T30, T40, T45, T50	4 jeux

2020HOMR



80
PCS.

- Dimensions du présentoir : 220 x 260 x 270 mm
- Grande capacité, adapté à plusieurs dimensions

1125MR		H2 H2.5 H3 H4 H5 H6 H7 H8 H10 H12 (x8)
--------	--	---

PRTCMDIV18



18
jeux

Contenu

20419PR	Extra long	T10H, T15H, T20H, T25H, T27H, T30H, T40H, T45H, T50H	2 jeux
20515PR01	Extra long	M5, M6, M8, M10, M12	1 jeu
20505PR01	Standard	M5, M6, M8, M10, M12	1 jeu
20319PR	Extra long	T10, T15, T20, T25, T27, T30, T40, T45, T50	2 jeux
20309PR	Standard	M5, M6, M8, M10, M12	2 jeux
20308PR	Standard	T9, T10, T15, T20, T25, T27, T30, T40	1 jeu
20407PR	Standard	T10, T15, T20, T25, T27, T30, T40	1 jeu
20109MR	Extra long	1.5, 2, 2.5, 3, 4, 5, 6, 8, 10	2 jeux
20107SR	Long	3/32", 1/8", 5/32", 3/16", 1/4", 5/16", 3/8"	2 jeux
20219MR	Standard	1.5, 2, 2.5, 3, 4, 5, 6, 8, 10	2 jeux
20218MR	Standard	2, 2.5, 3, 4, 5, 6, 8, 10	2 jeux



Kit réparation pour vélos

20A16MR

- Ensemble d'outils de réparation pour vélos 16 en 1



Contenu	kg	10 / 60
● H2, H2.5, H3, H4, H5, H6	0.27	
○ 8, 9, 10 mm		
⊕ PH2		
⊖ 5.0		
Clé à rayons: 14GE		
Rallonge carré conducteur 1/4"		
Clés : 8 / 10 / 15 mm		

20A17MR

- Ensemble d'outils de réparation pour vélos 20 en 1



Contenu	kg	10 / 60
● H2, H2.5, H3, H4, H5, H6	0.28	
○ 9, 10, 12, 13, 15		
⊕ PH2		
⊖ 5.0		
○ Douille : 8mm		
Clé à rayons: 14GE / 15GE / 0.136"		
Dérive chaîne		
Démonte pneu x2		

Ensemble d'outils pliants en aluminium

20317MR

- Ensemble d'outils pliants en aluminium 7-en-1



Spec	Contenu	kg	10 / 200
Sur monture	● H1.5, H2, H2.5, H3, H4, H5, H6	0.09	

Clés mâles à poignée en L

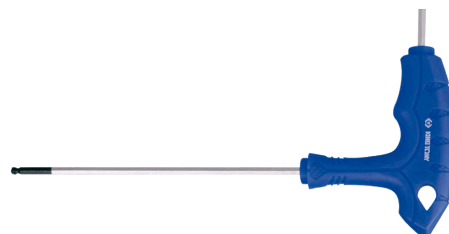
- Matériau - SNCM - Acier allié V
- Finition : Chrome polie avec pointe noire

1160MR



- 6 Pans
- Tête sphérique, inclinaison de 30°

	mm	mm	mm		
116002MR	H2	95	145	19.0	10 / 200
116025MR	H2.5	95	145	21.5	10 / 200
116003MR	H3	95	145	25.0	10 / 200
116004MR	H4	95	145	32.5	10 / 200
116005MR	H5	150	215	74.0	10 / 200
116006MR	H6	150	215	92.0	10 / 200
116007MR	H7	150	215	120.0	10 / 200
116008MR	H8	200	280	212.5	10 / 80
116010MR	H10	200	280	289.5	10 / 80

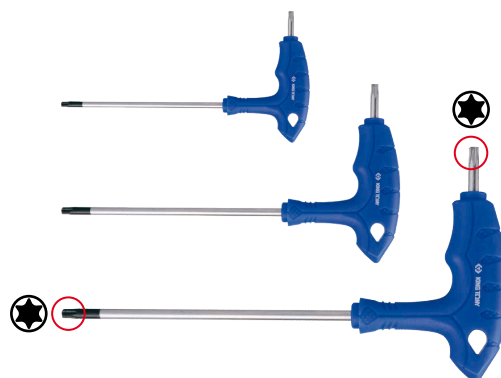


1163TR



- TORX®

	Dim.	mm	mm		
116310TR	T10	95	145	24.0	10 / 200
116315TR	T15	95	145	27.0	10 / 200
116320TR	T20	95	145	31.0	10 / 200
116325TR	T25	95	145	35.5	10 / 200
116327TR	T27	150	215	69.5	10 / 200
116330TR	T30	150	215	86.0	10 / 200
116340TR	T40	150	215	105.5	10 / 200
116345TR	T45	200	280	181.5	10 / 80
116350TR	T50	200	280	214.5	10 / 80

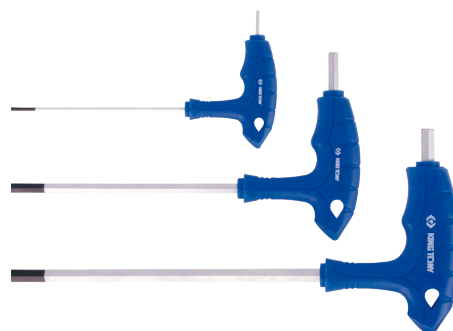


1165MR



- 6 Pans

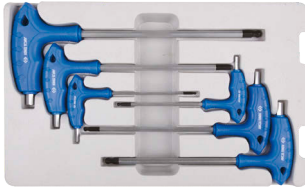
	mm	mm	mm		
116502MR	H2	95	145	19.0	10 / 200
116525MR	H2.5	95	145	21.5	10 / 200
116503MR	H3	95	145	25.0	10 / 200
116504MR	H4	95	145	32.5	10 / 200
116505MR	H5	150	215	74.0	10 / 200
116506MR	H6	150	215	92.0	10 / 200
116507MR	H7	150	215	120.0	10 / 200
116508MR	H8	200	280	212.5	10 / 80
116510MR	H10	200	280	289.5	10 / 80



Jeux de clés mâles à poignée en L

- Lame en SNCM + V
- Finition : lame polie, chromée, empreinte traitée noire

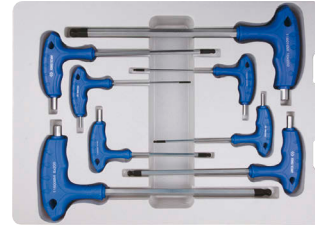
22106MR



6
PCS.

Spec.	Contenu	kg	1 / 20
Deux têtes 6 pans : sphérique et normale	1160MR	0.68	
			H3, H4, H5, H6, H7, H8

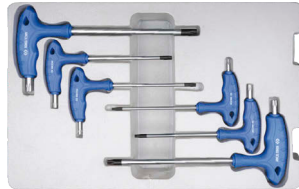
22108MR



8
PCS.

Spec.	Contenu	kg	1 / 10
Deux têtes 6 pans : sphérique et normale	1160MR	0.97	
			H2, H2.5, H3, H4, H5, H6, H8, H10

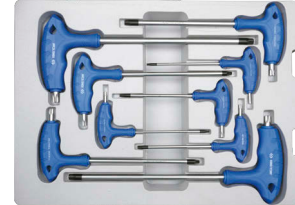
22306PR



6
PCS.

Spec.	Contenu	kg	1 / 20
Deux têtes : TORX® et RESISTORX®	1163R	0.46	
			T10H, T15H, T20H, T25H, T30H, T40H

22309PR



9
PCS.

Spec.	Contenu	kg	1 / 10
Deux têtes : TORX® et RESISTORX®	1163R	1.0	
			T10H, T15H, T20H, T25H, T27H, T30H, T40H, T45H, T50H

22208MR



8
PCS.

Spec.	Contenu	kg	1 / 10
6 pans	1165MR	0.97	
			H2, H2.5, H3, H4, H5, H6, H8, H10

22118MR



8
PCS.

Spec.	Contenu	kg	1 / 12
Deux têtes 6 pans : sphérique et normale	1160MR	1.1	
			H2, H2.5, H3, H4, H5, H6, H8, H10

22218MR



8
PCS.

Spec.	Contenu	kg	1 / 12
6 pans	1165MR	1.1	
			H2, H2.5, H3, H4, H5, H6, H8, H10

22319PR



9
PCS.



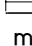
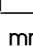


Spec.	Contenu	kg	1 / 12
Deux têtes : TORX® et RESISTORX®	1163R	1.2	
			T10H, T15H, T20H, T25H, T27H, T30H, T40H, T45H, T50H

Clés mâles à poignée en T

- Lame en SNCM + V
- Finition : lame polie, chromée, empreinte traitée noire

1150MR

- 6 Pans
- Tête sphérique, inclinaison de 30°







						
115002MR	H2	100	137	28	10 / 200	
115025MR	H2.5	100	137	30	10 / 200	
115003MR	H3	100	137	32	10 / 200	
115004MR	H4	100	137	38	10 / 200	
115005MR	H5	150	188	65	10 / 200	
115006MR	H6	150	188	79	10 / 200	



115008MR	H8	200	240	159	10 / 120
115010MR	H10	200	240	217	10 / 120

1155MR

- 6 Pans



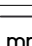
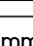


						
115502MR	H2	100	137	90.4	28	10 / 200
115525MR	H2.5	100	137	90.4	30	10 / 200
115503MR	H3	100	137	90.4	32	10 / 200
115504MR	H4	100	137	90.4	38	10 / 200
115505MR	H5	150	188	100	65	10 / 200
115506MR	H6	150	188	100	79	10 / 200



115508MR	H8	200	240	120	159	10 / 120
115510MR	H10	200	240	120	217	10 / 120

1153R

- TORX®

						
115310R	T10	100	137	40	10 / 200	
115315R	T15	100	137	40	10 / 200	
115320R	T20	100	137	40	10 / 200	
115325R	T25	100	137	40	10 / 200	
115327R	T27	150	188	73	10 / 200	
115330R	T30	150	188	74	10 / 200	
115340R	T40	150	188	88	10 / 120	






115345R	T45	200	240	173	10 / 120
115350R	T50	200	240	173	10 / 120

Jeux de clés mâles à poignée en T

21108MR






8
PCS.

Spec.	Contenu		
6 Pans sphérique	 1150MR H2, H2.5, H3, H4, H5, H6, H8, H10	1.1	1 / 12


21208MR



8
PCS.

Spec.	Contenu		
6 Pans	 1155MR H2, H2.5, H3, H4, H5, H6, H8, H10	1.1	1 / 12

21309PR

Spec.	Contenu	 1.1	 1 / 12
TORX®	 1153R	T10, T15, T20, T25, T27, T30, T40, T45, T50	









9
PCS.

Clé mâle en T et jeu

1195M

- Empreinte 6 Pans aux 3 extrémités
- 3 crans d'arrêt





	 mm	 mm	 mm		
119502M	H2	64	126.5	22	10 / 200
119525M	H2.5	64	126.5	22	10 / 200
119503M	H3	64	126.5	23	10 / 200
119504M	H4	89.5	181	62	10 / 200
119505M	H5	89.5	182	65	10 / 200
119506M	H6	105	210	120	6 / 48
119508M	H8	124	250	224	4 / 32
119510M	H10	145	300	386	5 / 50

23106MR

- Lame en SNCM + V
- Finition : lame polie, chromée, empreinte traitée noire



6
PCS.

Spec.	Contenu	 1
6 Pans	 1195M	H3, H4, H5, H6, H8, H10

